

**Greenburgh Central School District**

**Districtwide Lead in Drinking Water  
Sampling and Remediation Plan**

**February 2020**



**37 Moore Avenue  
Mount Kisco, NY 10549  
(914) 864-1699  
[www.envirohealth.org](http://www.envirohealth.org)**

**Project #19446**

**Districtwide Lead in Drinking Water  
Sampling and Remediation Plan**

**Performed for:**

**Greenburgh Central School District  
475 West Hartsdale Avenue  
Hartsdale, NY 10530**

**February 2020**

**Prepared by:**

**Enviroscience Consultants, Inc.  
37 Moore Avenue  
Mount Kisco, NY 10549  
(914) 864-1699**

**Project #19446**

**President**



---

**Glenn Neuschwender**

# **Districtwide Lead in Drinking Water Sampling and Remediation Plan**

## **Table of Contents**

### **I. Executive Summary**

### **II. Sampling Methodology**

### **III. Initial Results**

**Appendix A – Highview Elementary School**

**Appendix B – Lee F. Jackson Elementary School**

**Appendix C – Richard J. Bailey Elementary School**

**Appendix D – Woodlands Middle/High School**

**Appendix E – Early Childhood Center**

**Appendix F – Edith Winthrop Teachers Center**

**Appendix G – Transportation Center**

**Appendix H – Administration Building**

March 5, 2020

Mr. Michael Falcone  
Greenburgh CSD  
475 Hartsdale Avenue  
Hartsdale, NY 10530

## **I. Executive Summary**

The Greenburgh Central School District has developed their 2020 Lead in Drinking Water Sampling and Analysis Program, as required by the New York State Department of Health (Public Health Law Sections 1370-a and 1110, Subpart 67-4 Lead Testing in School Drinking Water).

In accordance with the regulation, this Lead Remediation Plan is prepared to identify locations deemed as Applicable Drinking Water Sources and report first draw sample results, to mitigate locations where sample results exceed 15 parts per billion, to identify locations deemed as Non-Applicable Water Sources, communicate this designation to building occupants, and to develop strategies for monitoring locations deemed Non-Applicable Water Sources to insure building occupants do not consume water from these locations.

Within the Greenburgh Central School District, the following locations have been deemed Applicable Drinking Water Sources by the administration:

- 1) Water fountains and bottle filling stations;
- 2) Kitchen water faucets and pot fillers used in food preparation;
- 3) Ice machines
- 4) Elementary School classroom sinks
- 5) Home Economics classroom sinks
- 6) Nurse's Office sinks

First draw samples were collected from each of these locations within the District, and analyzed by a New York State Department of Health ELAP certified laboratory. The chains of custody are available upon request. For results at or below 15 ppb, no further action is required until 2025. For locations above 15 ppb, options include: second and third draw sample collection to determine source of lead, designation of the location as Non-applicable Water Source, or permanent removal of the fixture from the location. In either case, the result was communicated by Enviroscience Consultants, and the fixture was shut off by the District immediately upon receipt of results.

The following locations within the Greenburgh Central School District were deemed Non-Applicable Water Sources by the administration:

- 1) Science Laboratory sinks
- 2) Art Room sinks
- 3) Other Bathroom sinks
- 4) Outside spigots
- 5) Custodial Closet sinks

In these cases, the District has placed signs adjacent to the fixture to notify occupants that the water is not intended for consumption. To further support this protocol, the following management of the locations is required:

- 1) Science Laboratory sinks - communicate in writing with students that these locations are for science experiments and hand washing only, not for consumption. This is most easily accomplished by including this language in the laboratory safety paperwork distributed to students at the beginning of the school year. This program should be monitored by the respective science teachers, and any deficiencies reported for assessment and revision, if necessary, by the Facilities Department.
- 2) Art Room sinks - communicate in writing to students that these locations are for cleaning of art supplies and hand washing only, not for consumption. This is most easily accomplished by including this language in the course paperwork distributed to students at the beginning of the school year. This program should be monitored by the respective art teachers, and any deficiencies reported for assessment and revision, if necessary, by the Facilities Department.
- 3) Other Bathroom sinks - in intermediate buildings, signage should be sufficient for communicating the concept of hand washing only. In elementary schools, personal hygiene should be integrated into curriculum to ensure students understand bathroom sinks are for hand washing only, and not consumption. Further, show what the signage looks like in bathrooms so they learn to recognize its meaning. This program should be monitored by teachers and staff to ensure consumption is not taking place, and any deficiencies reported for assessment and revision, if necessary, by the Facilities Department.
- 4) Outside spigots - all-weather signage will be installed at each location. Further, spigots will have a special key maintained by the custodial staff to ensure that non-authorized persons do not fill sports coolers or use hoses for consumption. This program should be monitored by custodial staff to ensure consumption is not taking place, and any deficiencies reported for assessment and revision, if necessary, by the Facilities Department.
- 5) Custodial Closet sinks - these locations should be accessed by custodial personnel only, and locked when not in use. Access to others should be restricted. This program should be monitored by custodial staff to ensure consumption is not taking place, and any deficiencies reported for assessment and revision, if necessary, by the Facilities Department.

## II. Sampling Methodology

In accordance with the regulation, EnviroScience Consultants, Inc. performed initial water sampling throughout the Greenburgh Central School District February 25, 2020. Samples were collected in wide-mouth 250 milliliter containers and were collected in the morning hours before the facilities opened. The water sources were not used for at least 8 hours and not more that 18 hours prior to sampling. Unique source numbers and designations were assigned to each source location. Unique sample identification numbers were assigned to each sample taken. The key to fixture type codes and the sampling location schematics are shown below.

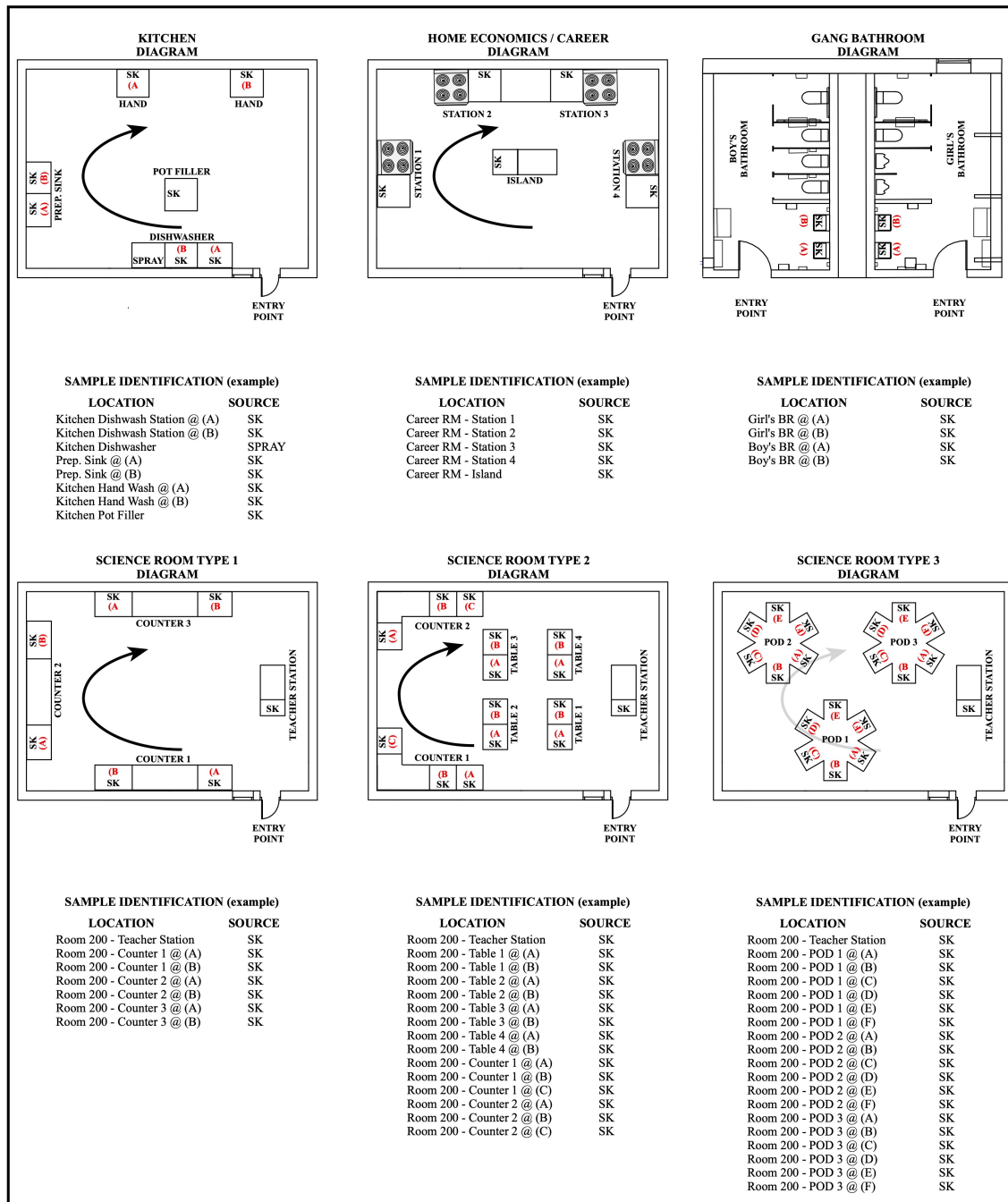
### Fixture Type Codes

BF	Bottle Filler
HB	Hose Bib
IM	Ice Machine
OS	Other Source
PF	Pot Filler
SK	Sink
SL	Supply Line
SP	Spigot
SPY	Spray
SS	Slop Sink
V	Valve
WC	Water Cooler
WF	Water Fountain

### Source Designations

App	Applicable
N/A	Non-applicable

## Sampling Location Schematics



### **III. Initial Results:**

All water source locations in each of the school buildings were assessed. Water source locations identified as drinking water sources were considered Applicable, and first draw samples were collected. Water source locations identified as non-drinking water sources were considered Non-applicable and these locations were documented.

The results of the initial sampling and the use of signs warning against water use at Non-applicable sources is documented in the School Water Outlet Inventory for each building (Appendix A through H).

All elevated locations should be taken off line until the remediation is completed. Any other drinking water sources in these buildings that were not functional at the time of initial sampling and have not been tested should be tested. All locations deemed non-applicable, but do not have signs, should be taken off line until signs have been posted.

The following is a summary of results in parts per billion (ppb) of locations where sample results were found above 15 ppb:

#### **Highview Elementary School**

<b>Room 4</b>	<b>SK</b>	<b>26.9</b>
<b>Room 12</b>	<b>SK</b>	<b>51.1</b>
<b>Room 12</b>	<b>WF</b>	<b>59.3</b>



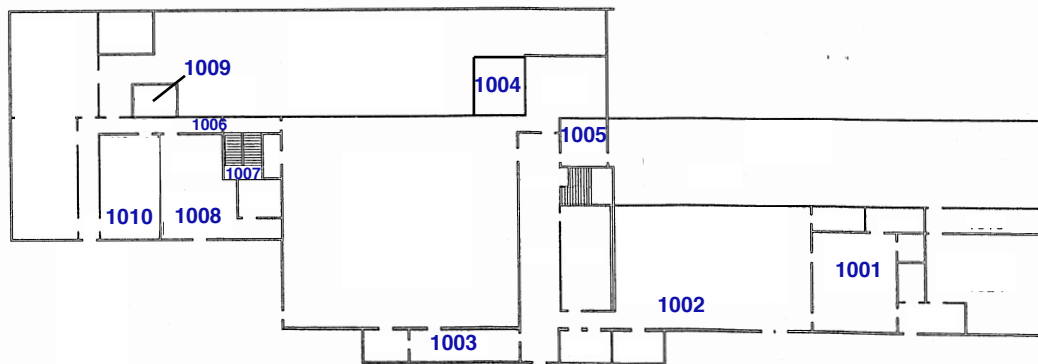
## Appendix A

Space #	Sample Location	Fixture Type	App or N/A	1 <sup>st</sup> Draw Results (ppb)	1st Draw Sampling Date	15 Second Draw Results (ppb)	60 Second Draw Results (ppb)	Flush Sampling Date	Remedial Recommendation	Remedial Response	Post Remedial Results (ppb)	Post Remedial Sampling Date
1001-1	Dishwash Station	SPY	N/A		2/25/2020	-	-	-	None	SIGN	-	-
1001-2	Kitchen 3 Bay	SK	App	1.9	2/25/2020	-	-	-	None	-	-	-
1001-3	Kitchen Island	SK	App	7.32	2/25/2020	-	-	-	None	-	-	-
1002-1	Cafeteria	WF	App	<1.0	2/25/2020	-	-	-	None	-	-	-
1002-2	Cafeteria	BF	App	<1.0	2/25/2020	-	-	-	None	-	-	-
1003-1	Girl's Bathroom by Gym @ A	SK	N/A		2/25/2020	-	-	-	None	SIGN	-	-
1003-2	Girl's Bathroom by Gym @ B	SK	N/A		2/25/2020	-	-	-	None	SIGN	-	-
1003-3	Girl's Bathroom by Gym @ C	SK	N/A		2/25/2020	-	-	-	None	SIGN	-	-
1004-1	Boy's Bathroom by Elevator @ A	SK	N/A		2/25/2020	-	-	-	None	SIGN	-	-
1004-2	Boy's Bathroom by Elevator @ B	SK	N/A		2/25/2020	-	-	-	None	SIGN	-	-
1005-1	Custodial Closet by Elevator	SS	N/A		2/25/2020	-	-	-	None	SIGN	-	-
1006-1	Hallway by Music Classroom	WF	App	<1.0	2/25/2020	-	-	-	None	-	-	-
1006-2	Hallway by Music Classroom	BF	App	<1.0	2/25/2020	-	-	-	None	-	-	-
1007-1	Boiler Room	SS	N/A		2/25/2020	-	-	-	None	SIGN	-	-
1008-1	Music Classroom	SK	App	9.08	2/25/2020	-	-	-	None	-	-	-
1009-1	Adult Bathroom by Boiler Room	SK	N/A		2/25/2020	-	-	-	None	SIGN	-	-
1010-1	Art Room @ A	SK	N/A		2/25/2020	-	-	-	None	SIGN	-	-
1010-2	Art Room @ B	SK	N/A		2/25/2020	-	-	-	None	SIGN	-	-
1010-3	Art Room @ C	SK	N/A		2/25/2020	-	-	-	None	SIGN	-	-
1010-4	Art Room @ D	SK	N/A		2/25/2020	-	-	-	None	SIGN	-	-
2001-1	Faculty Lounge Bathroom	SK	N/A		2/25/2020	-	-	-	None	SIGN	-	-
2002-1	Custodial Closet by Faculty Lounge	SS	N/A		2/25/2020	-	-	-	None	SIGN	-	-

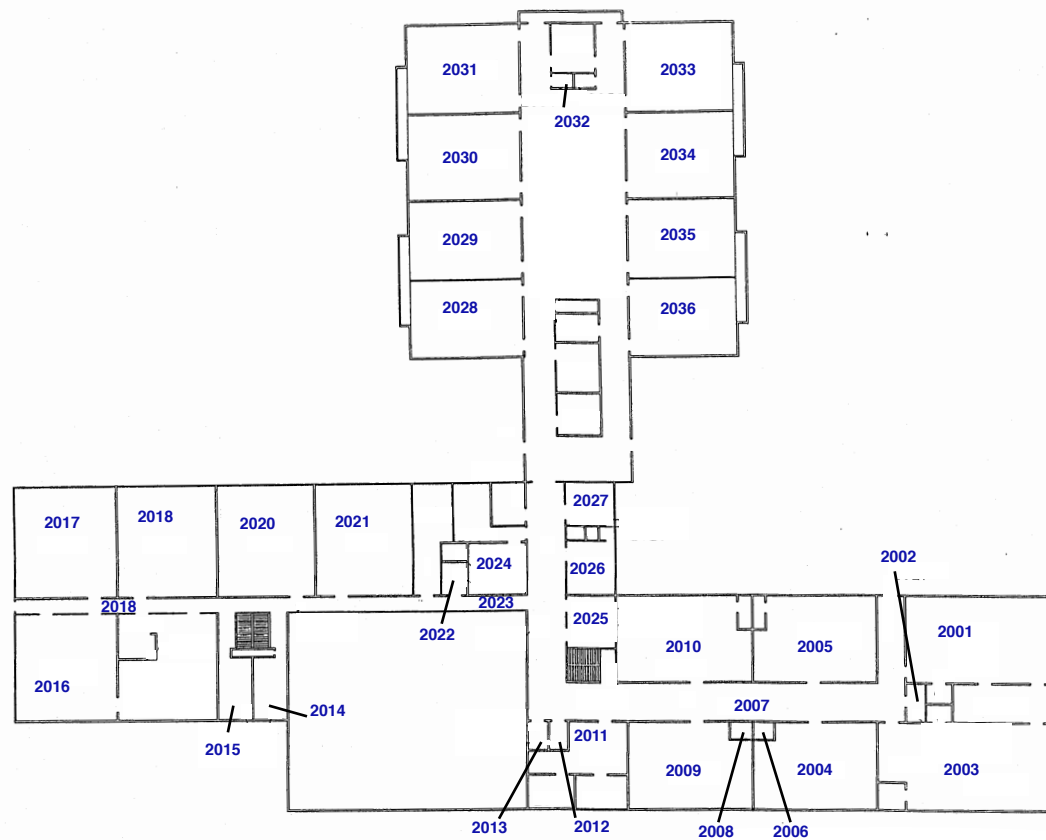
Space #	Sample Location	Fixture Type	App or N/A	1 <sup>st</sup> Draw Results (ppb)	1st Draw Sampling Date	15 Second Draw Results (ppb)	60 Second Draw Results (ppb)	Flush Sampling Date	Remedial Recommendation	Remedial Response	Post Remedial Results (ppb)	Post Remedial Sampling Date
2003-1	Room 2	SK	App	2.22	2/25/2020	-	-	-	None	-	-	-
2003-2	Room 2	WF	N/A		2/25/2020	-	-	-	None	SIGN	-	-
2004-1	Room 4	SK	App	26.9	2/25/2020				None	Fixture Replacement	4.03	3/11/20
2004-2	Room 4	WF	N/A		2/25/2020	-	-	-	None	SIGN	-	-
2005-1	Room 3	SK	App	7.8	2/25/2020	-	-	-	None	-	-	-
2005-2	Room 3	WF	N/A		2/25/2020	-	-	-	None	SIGN	-	-
2006-1	Boy's Bathroom by Room 3	SK	N/A		2/25/2020	-	-	-	None	SIGN	-	-
2007-1	Hallway by Room 3	WF	App	<1.0	2/25/2020	-	-	-	None	-	-	-
2007-2	Hallway by Room 3	BF	App	<1.0	2/25/2020	-	-	-	None	-	-	-
2008-1	Girl's Bathroom by Room 6	SK	N/A		2/25/2020	-	-	-	None	SIGN	-	-
2009-1	Room 6	SK	App	3.43	2/25/2020	-	-	-	None	-	-	-
2009-2	Room 6	WF	N/A		2/25/2020	-	-	-	None	SIGN	-	-
2010-1	Room 5	SK	App	2.03	2/25/2020	-	-	-	None	-	-	-
2010-2	Room 5	WF	N/A		2/25/2020	-	-	-	None	SIGN	-	-
2011-1	Psychologist Suite	SK	App	7.99	2/25/2020	-	-	-	None	-	-	-
2011-2	Psychologist Suite	WF	N/A		2/25/2020	-	-	-	None	SIGN	-	-
2012-1	Adult Bathroom by Stairs	SK	N/A		2/25/2020	-	-	-	None	SIGN	-	-
2013-1	Adult Bathroom in corner	SK	N/A		2/25/2020	-	-	-	None	SIGN	-	-
2014-1	Boy's Bathroom by Stairs @ A	SK	N/A		2/25/2020	-	-	-	None	SIGN	-	-
2014-2	Boy's Bathroom by Stairs @ B	SK	N/A		2/25/2020	-	-	-	None	SIGN	-	-
2015-1	Girl's Bathroom by Stairs @ A	SK	N/A		2/25/2020	-	-	-	None	SIGN	-	-
2015-2	Girl's Bathroom by Stairs @ B	SK	N/A		2/25/2020	-	-	-	None	SIGN	-	-

Space #	Sample Location	Fixture Type	App or N/A	1 <sup>st</sup> Draw Results (ppb)	1st Draw Sampling Date	15 Second Draw Results (ppb)	60 Second Draw Results (ppb)	Flush Sampling Date	Remedial Recommendation	Remedial Response	Post Remedial Results (ppb)	Post Remedial Sampling Date
2015-3	Girl's Bathroom by Stairs @ C	SK	N/A		2/25/2020	-	-	-	None	SIGN	-	-
2016-1	Library Office/Server Closet	SK	N/A		2/25/2020	-	-	-	None	SIGN	-	-
2017-1	Room 10	SK	App	13.7	2/25/2020	-	-	-	None	-	-	-
2017-2	Room 10	WF	N/A		2/25/2020	-	-	-	None	SIGN	-	-
2018-1	Hallway by Room 10	WF	N/A		2/25/2020	-	-	-	None	SIGN	-	-
2019-1	Room 9	SK	App	4.12	2/25/2020	-	-	-	None	-	-	-
2019-2	Room 9	WF	N/A		2/25/2020	-	-	-	None	SIGN	-	-
2020-1	Room 8	SK	App	6.49	2/25/2020	-	-	-	None	-	-	-
2020-2	Room 8	WF	N/A		2/25/2020	-	-	-	None	SIGN	-	-
2021-1	Room 7	SK	App	2.37	2/25/2020	-	-	-	None	-	-	-
2021-2	Room 7	WF	N/A		2/25/2020	-	-	-	None	SIGN	-	-
2022-1	Custodial Closet by Room 7	SS	N/A		2/25/2020	-	-	-	None	SIGN	-	-
2023-1	Hallway by Main Office	WF	App	<1.0	2/25/2020	-	-	-	None	-	-	-
2023-2	Hallway by Main Office	BF	App	<1.0	2/25/2020	-	-	-	None	-	-	-
2024-1	Nurse's Office	SK	App	1.49	2/25/2020	-	-	-	None	-	-	-
2024-2	Nurse's Office	OS	App	6.58	2/25/2020	-	-	-	None	-	-	-
2025-1	Principal's Office Bathroom Sink	SK	N/A		2/25/2020	-	-	-	None	SIGN	-	-
2026-1	Boy's Bathroom by Room 16 @ A	SK	N/A		2/25/2020	-	-	-	None	SIGN	-	-
2026-2	Boy's Bathroom by Room 16 @ B	SK	N/A		2/25/2020	-	-	-	None	SIGN	-	-
2026-3	Boy's Bathroom by Room 16 @ C	SK	N/A		2/25/2020	-	-	-	None	SIGN	-	-
2027-1	Girl's Bathroom by Room 16 @ A	SK	N/A		2/25/2020	-	-	-	None	SIGN	-	-
2027-2	Girl's Bathroom by Room 16 @ B	SK	N/A		2/25/2020	-	-	-	None	SIGN	-	-

Space #	Sample Location	Fixture Type	App or N/A	1 <sup>st</sup> Draw Results (ppb)	1st Draw Sampling Date	15 Second Draw Results (ppb)	60 Second Draw Results (ppb)	Flush Sampling Date	Remedial Recommendation	Remedial Response	Post Remedial Results (ppb)	Post Remedial Sampling Date
2027-3	Girl's Bathroom by Room 16 @ C	SK	N/A		2/25/2020	-	-	-	None	SIGN	-	-
2028-1	3rd Grade Reading Lab	SK	App	2.2	2/25/2020	-	-	-	None	-	-	-
2028-2	3rd Grade Reading Lab	WF	N/A		2/25/2020	-	-	-	None	SIGN	-	-
2029-1	Room 17	SK	App	1.36	2/25/2020	-	-	-	None	-	-	-
2029-2	Room 17	WF	App	2.36	2/25/2020	-	-	-	None	-	-	-
2030-1	Room 18	SK	App	3.83	2/25/2020	-	-	-	None	-	-	-
2030-2	Room 18	WF	App	2.32	2/25/2020	-	-	-	None	-	-	-
2031-1	Social Workers Office	SK	App	5.3	2/25/2020	-	-	-	None	-	-	-
2031-2	Social Workers Office	WF	App	1.62	2/25/2020	-	-	-	None	-	-	-
2032-1	Custodial Closet by Social Worker's Office	SS	N/A		2/25/2020	-	-	-	None	SIGN	-	-
2033-1	Room 15	SK	App	2.71	2/25/2020	-	-	-	None	-	-	-
2033-2	Room 15	WF	N/A		2/25/2020	-	-	-	None	SIGN	-	-
2034-1	Room 14	SK	App	2.06	2/25/2020	-	-	-	None	-	-	-
2034-2	Room 14	WF	App	2	2/25/2020	-	-	-	None	-	-	-
2035-1	Room 13	SK	App	6.73	2/25/2020	-	-	-	None	-	-	-
2035-2	Room 13	WF	App	2.19	2/25/2020	-	-	-	None	-	-	-
2036-1	Room 12	SK	App	51.1	2/25/2020				None	Fixture Replacement	7.68	3/11/20
2036-2	Room 12	WF	App	59.3	2/25/2020				None	Removed from service		



GROUND FLOOR



FIRST FLOOR



ENVIROSCIENCE  
CONSULTANTS, INC  
2150 SMITHTOWN AVENUE  
RONKONKOMA, NY 11779  
(631) 580-3191  
FAX 580-3195  
www.envirohealth.org

KEY PLAN  
NO SCALE

PROJECT

LEAD IN DRINKING WATER SOURCE LOCATIONS  
HIGHVIEW ELEMENTARY SCHOOL  
FLOOR PLAN

CLIENT

GREENBURGH CENTRAL SCHOOL DISTRICT



PROJECT #: 19446

NOT TO SCALE  
Date: 02/25/2020

DRAWING 1 of 1

## Laboratory Report

NYE Report #: 2200917-14059

February 27, 2020

Enviroscience Consultants, Inc.  
2150 Smithtown Avenue  
Ronkonkoma, NY 11779

Project: Highview Elementary School

Dear Project Manager,

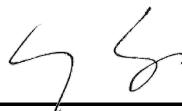
Enclosed is the Laboratory Analytical Report for potable water sample(s) received on February 25, 2020. New York Environmental analyzed the samples on February 26, 2020 for Lead (Pb) by EPA Method 200.9 Rev. 2.2.

If there are any questions regarding the analyses, please feel free to contact us at your convenience. New York Environmental is a NELAP accredited laboratory. Attached reported results meet the requirements of the NELAP standards unless otherwise noted.

Samples' analytical results relate only to the samples tested, in the condition received by the laboratory. This report shall not be reproduced except in its entirety without written approval of the laboratory.

We sincerely thank you for your business, and look forward to being of service for your future environmental testing needs.

Sincerely,



---

Li Tsang, Laboratory Director

Date Collected:	25 Feb 2020
Date Received:	25 Feb 2020
Date Analyzed:	26 Feb 2020

Analytical Method:	EPA 200.9 Rev. 2.2
Analyte, Matrix:	Lead, Potable Water

Lab ID	CID	Sample Location/Description	LOQ	Result	Units	Flag
200226J045	1	Kitchen 3 Bay - SK; Initial	1.00	1.90	µg/L	
200226J046	2	Kitchen Island - SK; Initial	1.00	7.32	µg/L	
200226J047	3	Cafeteria - WF; Initial	1.00	<1.00	µg/L	
200226J048	4	Cafeteria - BF; Initial	1.00	<1.00	µg/L	
200226J049	5	Hallway by Music Classroom - WF ; Initial	1.00	<1.00	µg/L	
200226J050	6	Hallway by Music Classroom - BF; Initial	1.00	<1.00	µg/L	
200226J051	7	Music Classroom - SK; Initial	1.00	9.08	µg/L	
200226J052	8	Room 2 - SK; Initial	1.00	2.22	µg/L	
200226J053	9	Room 4 - SK; Initial	1.00	26.9	µg/L	H
200226J054	10	Room 3 - SK; Initial	1.00	7.80	µg/L	
200226J055	11	Hallway by Room 3 - WF; Initial	1.00	<1.00	µg/L	
200226J056	12	Hallway by Room 3 - BF; Initial	1.00	<1.00	µg/L	
200226J057	13	Room 6 - SK; Initial	1.00	3.43	µg/L	
200226J058	14	Room 5 - SK; Initial	1.00	2.03	µg/L	
200226J059	15	Psychologist Suite - SK; Initial	1.00	7.99	µg/L	
200226J060	16	Room 10 - SK; Initial	1.00	13.7	µg/L	
200226J061	17	Room 9 - SK; Initial	1.00	4.12	µg/L	
200226J062	18	Room 8 - SK; Initial	1.00	6.49	µg/L	
200226J063	19	Room 7 - SK; Initial	1.00	2.37	µg/L	
200226J064	20	Hallway by Main Office - WF; Initial	1.00	<1.00	µg/L	
200226J065	21	Hallway by Main Office - BF; Initial	1.00	<1.00	µg/L	
200226J066	22	Nurse's Office - SK; Initial	1.00	1.49	µg/L	
200226J067	23	Nurse's Office - OS; Initial	1.00	6.58	µg/L	
200226J068	24	3rd Grade Reading Lab - SK; Initial	1.00	2.20	µg/L	
200226J069	25	Room 17 - SK; Initial	1.00	1.36	µg/L	
200226J070	26	Room 17 - WF; Initial	1.00	2.36	µg/L	



Date Collected:	25 Feb 2020
Date Received:	25 Feb 2020
Date Analyzed:	26 Feb 2020

Analytical Method:	EPA 200.9 Rev. 2.2
Analyte, Matrix:	Lead, Potable Water

Lab ID	CID	Sample Location/Description	LOQ	Result	Units	Flag
200226J071	27	Room 18 - SK; Initial	1.00	3.83	µg/L	
200226J072	28	Room 18 - WF; Initial	1.00	2.32	µg/L	
200226J073	29	Social Workers Office - SK; Initial	1.00	5.30	µg/L	
200226J074	30	Social Workers Office - WF; Initial	1.00	1.62	µg/L	
200226J075	31	Room 15 - SK; Initial	1.00	2.71	µg/L	
200226J076	32	Room 14 - SK; Initial	1.00	2.06	µg/L	
200226J077	33	Room 14 - WF; Initial	1.00	2.00	µg/L	
200226J078	34	Room 13 - SK; Initial	1.00	6.73	µg/L	
200226J079	35	Room 13 - WF; Initial	1.00	2.19	µg/L	
200226J080	36	Room 12 - SK; Initial	1.00	51.1	µg/L	E,H
200226J081	37	Room 12 - WF; Initial	1.00	59.3	µg/L	E,H

Comment:

CID: Client ID LOQ: Limit of Quantitation

E: Sample result exceeds instrument calibration, value is estimated.

H: Sample result exceeds applicable regulatory limit.

**Laboratory Report**

NYE Report #: 2201235-14215

March 13, 2020

Enviroscience Consultants, Inc.  
2150 Smithtown Avenue  
Ronkonkoma, NY 11779

Project: 19446; Highview Elementary School

Dear Project Manager,

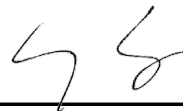
Enclosed is the Laboratory Analytical Report for potable water sample(s) received on March 12, 2020. New York Environmental analyzed the samples on March 13, 2020 for Lead (Pb) by EPA Method 200.9 Rev. 2.2.

If there are any questions regarding the analyses, please feel free to contact us at your convenience. New York Environmental is a NELAP accredited laboratory. Attached reported results meet the requirements of the NELAP standards unless otherwise noted.

Samples' analytical results relate only to the samples tested, in the condition received by the laboratory. This report shall not be reproduced except in its entirety without written approval of the laboratory.

We sincerely thank you for your business, and look forward to being of service for your future environmental testing needs.

Sincerely,



---

Li Tsang, Laboratory Director

Date Collected:	11 Mar 2020
Date Received:	12 Mar 2020
Date Analyzed:	13 Mar 2020

Analytical Method:	EPA 200.9 Rev. 2.2
Analyte, Matrix:	Lead, Potable Water

Lab ID	CID	Sample Location/Description	LOQ	Result	Units	Flag
200312O004	1	Room 12-SK, Initial	1.00	7.68	µg/L	
200312O005	2	Room 4-SK, Initial	1.00	4.03	µg/L	

Comment:

CID: Client ID LOQ: Limit of Quantitation

## Appendix B

Space #	Sample Location	Fixture Type	App or N/A	1 <sup>st</sup> Draw Results (ppb)	1st Draw Sampling Date	15 Second Draw Results (ppb)	60 Second Draw Results (ppb)	Flush Sampling Date	Remedial Recommendation	Remedial Response	Post Remedial Results (ppb)	Post Remedial Sampling Date
1001-1	Custodial Closet by Cafeteria	SS	N/A		2/25/2020	-	-	-	None	SIGN	-	-
1002-1	Kitchen - Island	SK	App	1.04	2/25/2020	-	-	-	None	-	-	-
1002-2	Kitchen - Bay 2 @ A	SK	App	2.15	2/25/2020	-	-	-	None	-	-	-
1002-3	Kitchen - Bay 2 @B	SK	App	1.26	2/25/2020	-	-	-	None	-	-	-
1002-4	Kitchen - Bay 3	SK	App	<1.0	2/25/2020	-	-	-	None	-	-	-
1002-5	Kitchen Bathroom	SK	N/A		2/25/2020	-	-	-	None	SIGN	-	-
1003-1	Boys Bathroom by Cafeteria @ A	SK	N/A		2/25/2020	-	-	-	None	SIGN	-	-
1003-2	Boys Bathroom by Cafeteria @ B	SK	N/A		2/25/2020	-	-	-	None	SIGN	-	-
1004-1	Girls Bathroom by Cafeteria @ A	SK	N/A		2/25/2020	-	-	-	None	SIGN	-	-
1004-2	Girls Bathroom by Cafeteria @ B	SK	N/A		2/25/2020	-	-	-	None	SIGN	-	-
1005-1	Custodial Closet by Art Room 7	SS	N/A		2/25/2020	-	-	-	None	SIGN	-	-
1006-1	Art Room	SK	N/A		2/25/2020	-	-	-	None	SIGN	-	-
1007-1	Room 6	SK	App	<1.0	2/25/2020	-	-	-	None	-	-	-
1007-2	Room 6	WF	App	<1.0	2/25/2020	-	-	-	None	-	-	-
1008-1	Room 5	SK	App	<1.0	2/25/2020	-	-	-	None	-	-	-
1008-2	Room 5	WF	App	1.12	2/25/2020	-	-	-	None	-	-	-
1009-1	Room 4	SK	App	<1.0	2/25/2020	-	-	-	None	-	-	-
1009-2	Room 4	WF	App	1.28	2/25/2020	-	-	-	None	-	-	-
1010-1	Room 3	SK	App	1.04	2/25/2020	-	-	-	None	-	-	-
1010-2	Room 3	WF	App	3.54	2/25/2020	-	-	-	None	-	-	-

Space #	Sample Location	Fixture Type	App or N/A	1 <sup>st</sup> Draw Results (ppb)	1st Draw Sampling Date	15 Second Draw Results (ppb)	60 Second Draw Results (ppb)	Flush Sampling Date	Remedial Recommendation	Remedial Response	Post Remedial Results (ppb)	Post Remedial Sampling Date
1011-1	Room 1	SK	App	1.68	2/25/2020	-	-	-	None	-	-	-
1011-2	Room 1	WF	App	1.23	2/25/2020	-	-	-	None	-	-	-
1012-1	Room 2	SK	App	<1.0	2/25/2020	-	-	-	None	-	-	-
1012-2	Room 2	WF	App	<1.0	2/25/2020	-	-	-	None	-	-	-
1013-1	Hallway by Main Office	WF	App	<1.0	2/25/2020	-	-	-	None	-	-	-
1013-2	Hallway by Main Office	BF	App	<1.0	2/25/2020	-	-	-	None	-	-	-
1014-1	Principals Office	SK	N/A		2/25/2020	-	-	-	None	SIGN	-	-
1015-1	Nurses Office	SK	App	1.25	2/25/2020	-	-	-	None	-	-	-
1015-2	Nurses Office Bathroom	SK	App	3.71	2/25/2020	-	-	-	None	-	-	-
1016-1	Adult Bathroom by Nurse - Right	SK	N/A		2/25/2020	-	-	-	None	SIGN	-	-
1017-1	Adult Bathroom by Nurse - Left	SK	N/A		2/25/2020	-	-	-	None	SIGN	-	-
1018-1	Custodial Closet by Nurse	SS	N/A		2/25/2020	-	-	-	None	SIGN	-	-
1019-1	The Reading Room	WF	App	<1.0	2/25/2020	-	-	-	None	-	-	-
1019-2	The Reading Room	BF	App	<1.0	2/25/2020	-	-	-	None	-	-	-
1019-3	The Reading Room	SK	App	<1.0	2/25/2020	-	-	-	None	-	-	-
1020-1	Physical Education Office	SK	N/A		2/25/2020	-	-	-	None	SIGN	-	-
1021-1	Hallway by Physical Education Office	WF	App	<1.0	2/25/2020	-	-	-	None	-	-	-
1021-2	Hallway by Physical Education Office	BF	App	<1.0	2/25/2020	-	-	-	None	-	-	-
1022-1	Room 208	SK	APP	<1.0	2/25/2020	-	-	-	None	-	-	-
1022-2	Room 208	WF	App	<1.0	2/25/2020	-	-	-	None	-	-	-

Space #	Sample Location	Fixture Type	App or N/A	1 <sup>st</sup> Draw Results (ppb)	1st Draw Sampling Date	15 Second Draw Results (ppb)	60 Second Draw Results (ppb)	Flush Sampling Date	Remedial Recommendation	Remedial Response	Post Remedial Results (ppb)	Post Remedial Sampling Date
1023-1	Room 207	SK	App	1.37	2/25/2020	-	-	-	None	-	-	-
1023-2	Room 207	WF	App	1.19	2/25/2020	-	-	-	None	-	-	-
1024-1	Room 206	SK	App	1.43	2/25/2020	-	-	-	None	-	-	-
1024-2	Room 206	WF	App	<1.0	2/25/2020	-	-	-	None	-	-	-
1025-1	Room 205	SK	App	1.79	2/25/2020	-	-	-	None	-	-	-
1025-2	Room 205	WF	App	<1.0	2/25/2020	-	-	-	None	-	-	-
1026-1	Room 204	SK	App	1.08	2/25/2020	-	-	-	None	-	-	-
1026-2	Room 204	WF	App	<1.0	2/25/2020	-	-	-	None	-	-	-
1027-1	Room 203	SK	App	1.3	2/25/2020	-	-	-	None	-	-	-
1027-2	Room 203	WF	App	1.66	2/25/2020	-	-	-	None	-	-	-
1028-1	Room 202	SK	App	1.87	2/25/2020	-	-	-	None	-	-	-
1028-2	Room 202	WF	App	1.15	2/25/2020	-	-	-	None	-	-	-
1029-1	Room 201	SK	App	1.16	2/25/2020	-	-	-	None	-	-	-
1029-2	Room 201	WF	App	<1.0	2/25/2020	-	-	-	None	-	-	-
1030-1	Room 106	SK	App	5.86	2/25/2020	-	-	-	None	-	-	-
1030-2	Room 106	WF	App	1.15	2/25/2020	-	-	-	None	-	-	-
1031-1	Room 105	SK	App	1.35	2/25/2020	-	-	-	None	-	-	-
1031-2	Room 105	WF	App	<1.0	2/25/2020	-	-	-	None	-	-	-
1032-1	Room 104	SK	App	2.37	2/25/2020	-	-	-	None	-	-	-
1032-2	Room 104	WF	App	1.79	2/25/2020	-	-	-	None	-	-	-

Space #	Sample Location	Fixture Type	App or N/A	1 <sup>st</sup> Draw Results (ppb)	1st Draw Sampling Date	15 Second Draw Results (ppb)	60 Second Draw Results (ppb)	Flush Sampling Date	Remedial Recommendation	Remedial Response	Post Remedial Results (ppb)	Post Remedial Sampling Date
1033-1	Room 103	SK	App	2.01	2/25/2020	-	-	-	None	-	-	-
1033-2	Room 103	WF	App	1.3	2/25/2020	-	-	-	None	-	-	-
1034-1	Room 102	SK	App	6.83	2/25/2020	-	-	-	None	-	-	-
1034-2	Room 102	WF	App	1.16	2/25/2020	-	-	-	None	-	-	-
1035-1	Room 101	SK	App	1.35	2/25/2020	-	-	-	None	-	-	-
1035-2	Room 101	WF	App	1.41	2/25/2020	-	-	-	None	-	-	-



## Laboratory Report

NYE Report #: 2200918-14060

February 27, 2020

Enviroscience Consultants, Inc.  
2150 Smithtown Avenue  
Ronkonkoma, NY 11779

Project: Lee F Jackson School

Dear Project Manager,

Enclosed is the Laboratory Analytical Report for potable water sample(s) received on February 25, 2020. New York Environmental analyzed the samples on February 26, 2020 for Lead (Pb) by EPA Method 200.9 Rev. 2.2.

If there are any questions regarding the analyses, please feel free to contact us at your convenience. New York Environmental is a NELAP accredited laboratory. Attached reported results meet the requirements of the NELAP standards unless otherwise noted.

Samples' analytical results relate only to the samples tested, in the condition received by the laboratory. This report shall not be reproduced except in its entirety without written approval of the laboratory.

We sincerely thank you for your business, and look forward to being of service for your future environmental testing needs.

Sincerely,



---

Li Tsang, Laboratory Director

Date Collected:	25 Feb 2020
Date Received:	25 Feb 2020
Date Analyzed:	26 Feb 2020

Analytical Method:	EPA 200.9 Rev. 2.2
Analyte, Matrix:	Lead, Potable Water

Lab ID	CID	Sample Location/Description	LOQ	Result	Units	Flag
200226J082	1	Kitchen - Island - SK; Initial	1.00	1.04	µg/L	
200226J083	2	Kitchen - Bay 2 @ A - SK; Initial	1.00	2.15	µg/L	
200226J084	3	Kitchen - Bay 2 @B - SK; Initial	1.00	1.26	µg/L	
200226J085	4	Kitchen - Bay 3 - SK; Initial	1.00	<1.00	µg/L	
200226J086	5	Room 6 - SK; Initial	1.00	<1.00	µg/L	
200226J087	6	Room 6 - WF; Initial	1.00	<1.00	µg/L	
200226J088	7	Room 5 - SK; Initial	1.00	<1.00	µg/L	
200226J089	8	Room 5 - WF; Initial	1.00	1.12	µg/L	
200226J090	9	Room 4 - SK; Initial	1.00	<1.00	µg/L	
200226J091	10	Room 4 - WF; Initial	1.00	1.28	µg/L	
200226J092	11	Room 3 - SK; Initial	1.00	1.04	µg/L	
200226J093	12	Room 3 - WF; Initial	1.00	3.54	µg/L	
200226J094	13	Room 1 - SK; Initial	1.00	1.68	µg/L	
200226J095	14	Room 1 - WF; Initial	1.00	1.23	µg/L	
200226J096	15	Room 2 - SK; Initial	1.00	<1.00	µg/L	
200226J097	16	Room 2 - WF; Initial	1.00	<1.00	µg/L	
200226J098	17	Hallway by Main Office - WF; Initial	1.00	<1.00	µg/L	
200226J099	18	Hallway by Main Office - BF; Initial	1.00	<1.00	µg/L	
200226J100	19	Nurses Office - SK; Initial	1.00	1.25	µg/L	
200226J101	20	Nurses Office Bathroom - SK; Initial	1.00	3.71	µg/L	
200226J102	21	The Reading Room - WF; Initial	1.00	<1.00	µg/L	
200226J103	22	The Reading Room - BF; Initial	1.00	<1.00	µg/L	
200226J104	23	The Reading Room - SK; Initial	1.00	<1.00	µg/L	
200226J105	24	Hallway by Physical Education Office - WF; Initial	1.00	<1.00	µg/L	
200226J106	25	Hallway by Physical Education Office - BF; Initial	1.00	<1.00	µg/L	
200226J107	26	Room 208 - SK; Initial	1.00	<1.00	µg/L	

Date Collected:	25 Feb 2020
Date Received:	25 Feb 2020
Date Analyzed:	26 Feb 2020

Analytical Method:	EPA 200.9 Rev. 2.2
Analyte, Matrix:	Lead, Potable Water

Lab ID	CID	Sample Location/Description	LOQ	Result	Units	Flag
200226J108	27	Room 208 - WF; Initial	1.00	<1.00	µg/L	
200226J109	28	Room 207 - SK; Initial	1.00	1.37	µg/L	
200226J110	29	Room 207 - WF; Initial	1.00	1.19	µg/L	
200226J111	30	Room 206 - SK; Initial	1.00	1.43	µg/L	
200226J112	31	Room 206 - WF; Initial	1.00	<1.00	µg/L	
200226J113	32	Room 205 - SK; Initial	1.00	1.79	µg/L	
200226J114	33	Room 205 - WF; Initial	1.00	<1.00	µg/L	
200226J115	34	Room 204 - SK; Initial	1.00	1.08	µg/L	
200226J116	35	Room 204 - WF; Initial	1.00	<1.00	µg/L	
200226J117	36	Room 203 - SK; Initial	1.00	1.30	µg/L	
200226J118	37	Room 203 - WF; Initial	1.00	1.66	µg/L	
200226J119	38	Room 202 - SK; Initial	1.00	1.87	µg/L	
200226J120	39	Room 202 - WF; Initial	1.00	1.15	µg/L	
200226J121	40	Room 201 - SK; Initial	1.00	1.16	µg/L	
200226J122	41	Room 201 - WF; Initial	1.00	<1.00	µg/L	
200226J123	42	Room 106 - SK; Initial	1.00	5.86	µg/L	
200226J124	43	Room 106 - WF; Initial	1.00	1.15	µg/L	
200226J125	44	Room 105 - SK; Initial	1.00	1.35	µg/L	
200226J126	45	Room 105 - WF; Initial	1.00	<1.00	µg/L	
200226J127	46	Room 104 - SK; Initial	1.00	2.37	µg/L	
200226J128	47	Room 104 - WF; Initial	1.00	1.79	µg/L	
200226J129	48	Room 103 - SK; Initial	1.00	2.01	µg/L	
200226J130	49	Room 103 - WF; Initial	1.00	1.30	µg/L	
200226J131	50	Room 102 - SK; Initial	1.00	6.83	µg/L	
200226J132	51	Room 102 - WF; Initial	1.00	1.16	µg/L	
200226J133	52	Room 101 - SK; Initial	1.00	1.35	µg/L	
200226J134	53	Room 101 - WF; Initial	1.00	1.41	µg/L	



Date Collected:	25 Feb 2020
Date Received:	25 Feb 2020
Date Analyzed:	26 Feb 2020

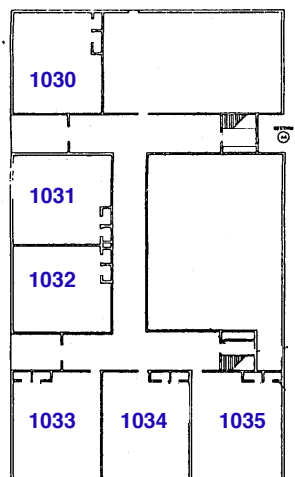
Analytical Method:	EPA 200.9 Rev. 2.2
Analyte, Matrix:	Lead, Potable Water

Lab ID	CID	Sample Location/Description	LOQ	Result	Units	Flag
--------	-----	-----------------------------	-----	--------	-------	------

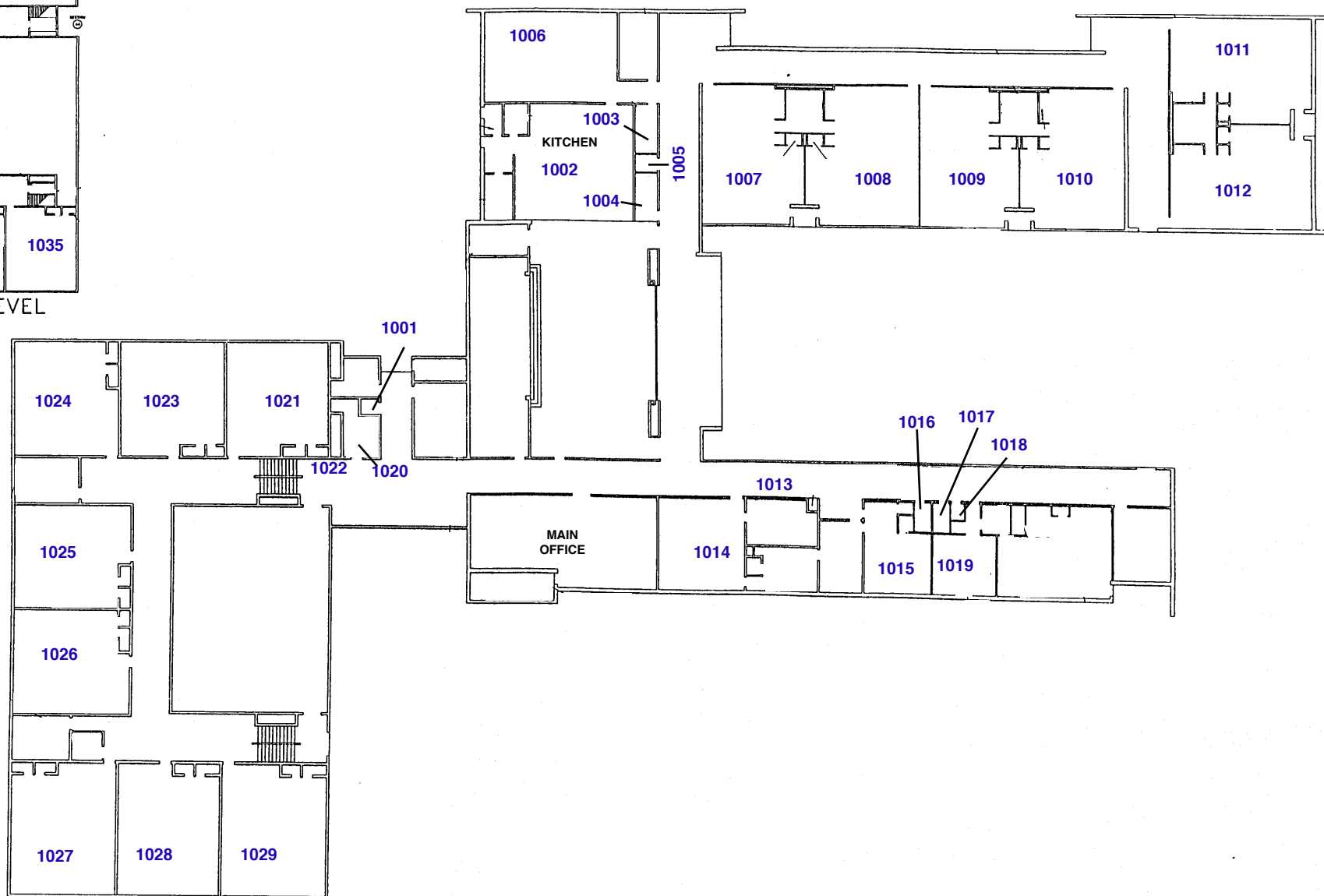
Comment:

CID: Client ID LOQ: Limit of Quantitation





LOWER LEVEL



ENVIROSCIENCE  
CONSULTANTS, INC  
2150 SMITHTOWN AVENUE  
RONKONKOMA, NY 11779  
(631) 580-3191  
FAX 580-3195  
www.envirohealth.org

KEY PLAN  
NO SCALE

PROJECT

LEAD IN DRINKING WATER SOURCE LOCATIONS  
LEE F. JACKSON ELEMENTARY SCHOOL  
FLOOR PLAN

CLIENT

GREENBURGH CENTRAL SCHOOL DISTRICT



PROJECT #: 19446

NOT TO SCALE

Date: 02/25/2020

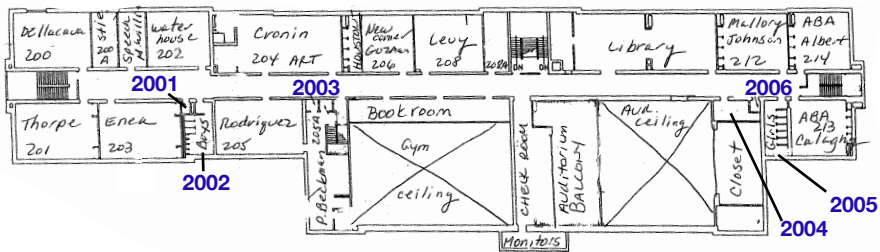
DRAWING 1 of 1

## Appendix C

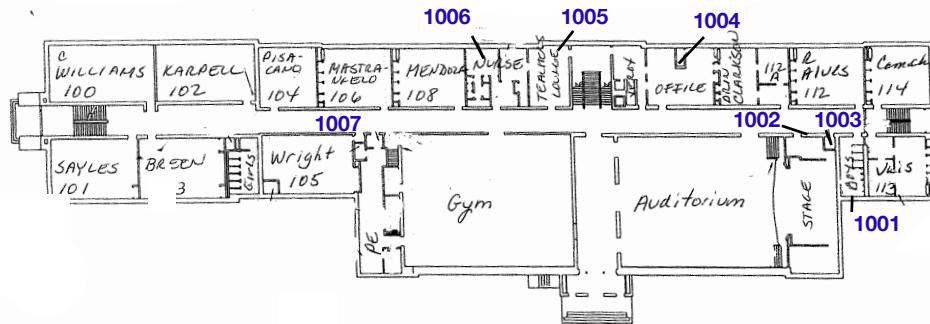
Space #	Sample Location	Fixture Type	App or N/A	1 <sup>st</sup> Draw Results (ppb)	1st Draw Sampling Date	15 Second Draw Results (ppb)	60 Second Draw Results (ppb)	Flush Sampling Date	Remedial Recommendation	Remedial Response	Post Remedial Results (ppb)	Post Remedial Sampling Date
0001-1	Kitchen Handwash	SK	N/A		2/25/2020	-	-	-	None	SIGN	-	-
0001-2	Kitchen 2 Bay	SK	App	7.14	2/25/2020	-	-	-	None	-	-	-
0001-3	Kitchen 3 Bay @ A	SK	App	2.7	2/25/2020	-	-	-	None	-	-	-
0001-4	Kitchen 3 Bay @ B	SK	App	<1.0	2/25/2020	-	-	-	None	-	-	-
0001-5	Kitchen 3 Bay	SPY	App	<1.0	2/25/2020	-	-	-	None	-	-	-
0002-1	Boy's Bathroom by Cafeteria	SK	N/A		2/25/2020	-	-	-	None	SIGN	-	-
0003-1	Art Room	SK	N/A		2/25/2020	-	-	-	None	SIGN	-	-
0004-1	Faculty Room	SK	N/A		2/25/2020	-	-	-	None	SIGN	-	-
0004-2	Faculty Room	SPY	N/A		2/25/2020	-	-	-	None	SIGN	-	-
0004-3	Faculty Room Bathroom	SK	N/A		2/25/2020	-	-	-	None	SIGN	-	-
0005-1	Girl's Bathroom by Science Lab	SK	N/A		2/25/2020	-	-	-	None	SIGN	-	-
0006-1	Hallway by Science Lab	WF	App	<1.0	2/25/2020	-	-	-	None	-	-	-
0006-2	Hallway by Science Lab	BF	App	<1.0	2/25/2020	-	-	-	None	-	-	-
0007-1	Science Lab	SS	N/A		2/25/2020	-	-	-	None	SIGN	-	-
1001-1	First Floor Boy's Bathroom @ A	SK	N/A		2/25/2020	-	-	-	None	SIGN	-	-
1001-2	First Floor Boy's Bathroom @ B	SK	N/A		2/25/2020	-	-	-	None	SIGN	-	-
1002-1	Hallway by First floor Boy's Bathroom	WF	App		2/25/2020	-	-	-	None	-	-	-
1002-2	Hallway by First floor Boy's Bathroom	BF	App	<1.0	2/25/2020	-	-	-	None	-	-	-
1003-1	Custodial Closet by First floor Boy's Bathroom	SS	N/A		2/25/2020	-	-	-	None	SIGN	-	-
1004-1	Main Office Bathroom	SK	N/A		2/25/2020	-	-	-	None	SIGN	-	-

Space #	Sample Location	Fixture Type	App or N/A	1 <sup>st</sup> Draw Results (ppb)	1st Draw Sampling Date	15 Second Draw Results (ppb)	60 Second Draw Results (ppb)	Flush Sampling Date	Remedial Recommendation	Remedial Response	Post Remedial Results (ppb)	Post Remedial Sampling Date
1005-1	Teacher's Break Room Bathroom	SK	N/A		2/25/2020	-	-	-	None	SIGN	-	-
1006-1	Nurse's Office	SK	N/A		2/25/2020	-	-	-	None	SIGN	-	-
1006-2	Nurse's Office Bathroom	SK	App	5.68	2/25/2020	-	-	-	None	-	-	-
1007-1	Hallway by Room 105	SK	App	<1.0	2/25/2020	-	-	-	None	-	-	-
1007-2	Hallway by Room 105	SK	App	<1.0	2/25/2020	-	-	-	None	-	-	-
1008-1	Girl's Bathroom by Room 102 @ A	SK	N/A		2/25/2020	-	-	-	None	SIGN	-	-
1008-2	Girl's Bathroom by Room 102 @ B	SK	N/A		2/25/2020	-	-	-	None	SIGN	-	-
1009-1	Custodial Closet by Room 102	SS	N/A		2/25/2020	-	-	-	None	SIGN	-	-
2001-1	Custodial Closet by Room 202	SS	N/A		2/25/2020	-	-	-	None	SIGN	-	-
2002-1	Boy's Bathroom by room 202 @ A	SK	N/A		2/25/2020	-	-	-	None	SIGN	-	-
2002-2	Boy's Bathroom by room 202 @ B	SK	N/A		2/25/2020	-	-	-	None	SIGN	-	-
2003-1	Hallway by Room 205	WF	App	<1.0	2/25/2020	-	-	-	None	-	-	-
2003-2	Hallway by Room 205	BF	App	<1.0	2/25/2020	-	-	-	None	-	-	-
2004-1	Custodial Closet by Room 213	SS	N/A		2/25/2020	-	-	-	None	SIGN	-	-
2005-1	Girl's Bathroom by Room 213 @ A	SK	N/A		2/25/2020	-	-	-	None	SIGN	-	-
2005-2	Girl's Bathroom by Room 213 @ B	SK	N/A		2/25/2020	-	-	-	None	SIGN	-	-
2006-1	Hallway by Room 213	WF	App	<1.0	2/25/2020	-	-	-	None	-	-	-
2006-2	Hallway by Room 213	BF	App	<1.0	2/25/2020	-	-	-	None	-	-	-

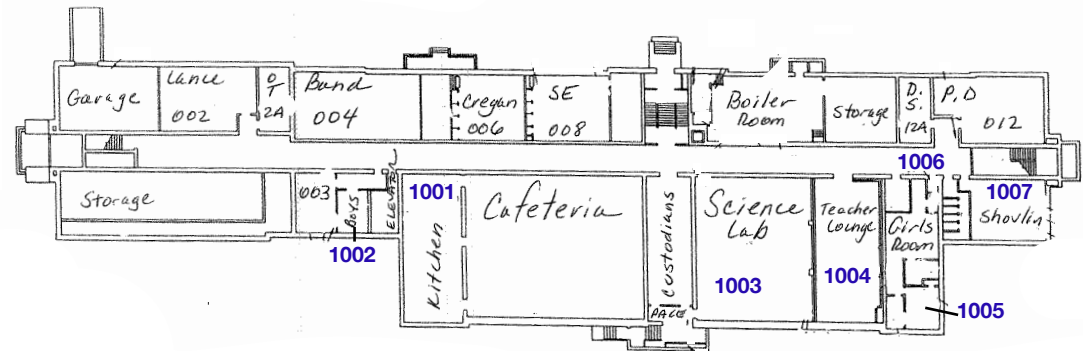




SECOND FLOOR



FIRST FLOOR



BASEMENT FLOOR



ENVIROSCIENCE  
CONSULTANTS, INC  
2150 SMITHTOWN AVENUE  
RONKONKOMA, NY 11779  
(631) 580-3191  
FAX 580-3195  
www.envirohealth.org

KEY PLAN  
NO SCALE

PROJECT

LEAD IN DRINKING WATER SOURCE LOCATIONS  
RICHARD J. BAILEY ELEMENTARY SCHOOL  
FLOOR PLAN

CLIENT

GREENBURGH CENTRAL SCHOOL DISTRICT



PROJECT #: 19446

NOT TO SCALE

Date: 02/25/2020

DRAWING 1 of 1

## Laboratory Report

NYE Report #: 2200920-14062

February 27, 2020

Enviroscience Consultants, Inc.  
2150 Smithtown Avenue  
Ronkonkoma, NY 11779

Project: Richard J Bailey Elementary School

Dear Project Manager,

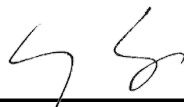
Enclosed is the Laboratory Analytical Report for potable water sample(s) received on February 25, 2020. New York Environmental analyzed the samples on February 26, 2020 for Lead (Pb) by EPA Method 200.9 Rev. 2.2.

If there are any questions regarding the analyses, please feel free to contact us at your convenience. New York Environmental is a NELAP accredited laboratory. Attached reported results meet the requirements of the NELAP standards unless otherwise noted.

Samples' analytical results relate only to the samples tested, in the condition received by the laboratory. This report shall not be reproduced except in its entirety without written approval of the laboratory.

We sincerely thank you for your business, and look forward to being of service for your future environmental testing needs.

Sincerely,

A handwritten signature in black ink, appearing to read 'Li Tsang', written over a horizontal line.

Li Tsang, Laboratory Director

Date Collected:	25 Feb 2020
Date Received:	25 Feb 2020
Date Analyzed:	26 Feb 2020

Analytical Method:	EPA 200.9 Rev. 2.2
Analyte, Matrix:	Lead, Potable Water

Lab ID	CID	Sample Location/Description	LOQ	Result	Units	Flag
200226J173	1	Kitchen 2 Bay - SK; Initial	1.00	7.14	µg/L	
200226J174	2	Kitchen 3 Bay @ A - SK; Initial	1.00	2.70	µg/L	
200226J175	3	Kitchen 3 Bay @ B - SK; Initial	1.00	<1.00	µg/L	
200226J176	4	Kitchen 3 Bay - SPY; Initial	1.00	<1.00	µg/L	
200226J177	5	Hallway by Science Lab - WF; Initial	1.00	<1.00	µg/L	
200226J178	6	Hallway by Science Lab - BF; Initial	1.00	<1.00	µg/L	
200226J179	7	Hallway by First floor Boy's Bathroom - BF; Initial	1.00	<1.00	µg/L	
200226J180	8	Nurse's Office Bathroom - SK; Initial	1.00	5.68	µg/L	
200226J181	9	Hallway by Room 105 - <b>WF</b> Initial	1.00	<1.00	µg/L	
200226J182	10	Hallway by Room 105 - <b>BF</b> Initial	1.00	<1.00	µg/L	
200226J183	11	Hallway by Room 205 - WF; Initial	1.00	<1.00	µg/L	
200226J184	12	Hallway by Room 205 - BF; Initial	1.00	<1.00	µg/L	
200226J185	13	Hallway by Room 213 - WF; Initial	1.00	<1.00	µg/L	
200226J186	14	Hallway by Room 213 - BF; Initial	1.00	<1.00	µg/L	

Comment:

CID: Client ID LOQ: Limit of Quantitation

## Appendix D

Space #	Sample Location	Fixture Type	App or N/A	1 <sup>st</sup> Draw Results (ppb)	1st Draw Sampling Date	15 Second Draw Results (ppb)	60 Second Draw Results (ppb)	Flush Sampling Date	Remedial Recommendation	Remedial Response	Post Remedial Results (ppb)	Post Remedial Sampling Date
1001-1	Main Office Conference Room	SK	App	<1.0	2/25/2020	-	-	-	None	-	-	-
1001-2	Super Intendent Office Bathroom	SK	N/A		2/25/2020	-	-	-	None	SIGN	-	-
1002-1	Womens Bathroom by Main Office @ A	SK	N/A		2/25/2020	-	-	-	None	SIGN	-	-
1002-2	Womens Bathroom by Main Office @ B	SK	N/A		2/25/2020	-	-	-	None	SIGN	-	-
1003-1	Hallway by Main Office	WF	App	<1.0	2/25/2020	-	-	-	None	-	-	-
1003-2	Hallway by Main Office	BF	App	<1.0	2/25/2020	-	-	-	None	-	-	-
1004-1	Mens Bathroom by Security Booth @ A	SK	N/A		2/25/2020	-	-	-	None	SIGN	-	-
1004-2	Mens Bathroom by Security Booth @ B	SK	N/A		2/25/2020	-	-	-	None	SIGN	-	-
1005-1	Hallway by Media Center	WF	App	<1.0	2/25/2020	-	-	-	None	-	-	-
1005-2	Hallway by Media Center	BF	App	<1.0	2/25/2020	-	-	-	None	-	-	-
1006-1	Art Room 3/New Principal Office @ A	SK	N/A		2/25/2020	-	-	-	None	SIGN	-	-
1006-2	Art Room 3/New Principal Office @ B	SK	N/A		2/25/2020	-	-	-	None	SIGN	-	-
1007-1	Custodial Closet by Room 8	SS	N/A		2/25/2020	-	-	-	None	SIGN	-	-
1008-1	Art Room 8 @ A	SK	N/A		2/25/2020	-	-	-	None	SIGN	-	-
1008-2	Art Room 8 @ A	SPY	N/A		2/25/2020	-	-	-	None	SIGN	-	-
1008-3	Art Room 8 @ B	SK	N/A		2/25/2020	-	-	-	None	SIGN	-	-
1008-4	Art Room 8 @ B	SPY	N/A		2/25/2020	-	-	-	None	SIGN	-	-
1009-1	Art Room 7	SS	N/A		2/25/2020	-	-	-	None	SIGN	-	-
1009-2	Art Room 7 @ A	SK	N/A		2/25/2020	-	-	-	None	SIGN	-	-
1009-3	Art Room 7 @ B	SK	N/A		2/25/2020	-	-	-	None	SIGN	-	-

Space #	Sample Location	Fixture Type	App or N/A	1 <sup>st</sup> Draw Results (ppb)	1st Draw Sampling Date	15 Second Draw Results (ppb)	60 Second Draw Results (ppb)	Flush Sampling Date	Remedial Recommendation	Remedial Response	Post Remedial Results (ppb)	Post Remedial Sampling Date
1010-1	Art Room 6	SK	N/A		2/25/2020	-	-	-	None	SIGN	-	-
1011-1	Mens Bathroom by Art Room 6	SK	N/A		2/25/2020	-	-	-	None	SIGN	-	-
1012-1	Womens Bathroom by Art Room 6	SK	N/A		2/25/2020	-	-	-	None	SIGN	-	-
1013-1	Hallway by Room 5	WF	N/A		2/25/2020	-	-	-	None	SIGN	-	-
1014-1	Mens Bathroom by Café	SK	N/A		2/25/2020	-	-	-	None	SIGN	-	-
1015-1	Hallway by Café	WF	App	<1.0	2/25/2020	-	-	-	None	-	-	-
1015-2	Hallway by Café	BF	App	<1.0	2/25/2020	-	-	-	None	-	-	-
1016-1	Womens Bathroom by Café @ A	SK	N/A		2/25/2020	-	-	-	None	SIGN	-	-
1016-2	Womens Bathroom by Café @ B	SK	N/A		2/25/2020	-	-	-	None	SIGN	-	-
1017-1	Nurses Office	SK	N/A		2/25/2020	-	-	-	None	SIGN	-	-
1017-2	Nurses Office Bathroom	SK	N/A		2/25/2020	-	-	-	None	SIGN	-	-
1017-3	Nurses Office Ice Machine	IM	App	<1.0	2/25/2020	-	-	-	None	-	-	-
1018-1	Kitchen Cooking Area Handwash	SK	N/A		2/25/2020	-	-	-	None	SIGN	-	-
1018-2	Custodial Closet in Kitchen	SS	N/A		2/25/2020	-	-	-	None	SIGN	-	-
1019-1	Guidance Office Mail Room	SK	App	2.87	2/25/2020	-	-	-	None	-	-	-
1020-1	Guidance Office Mens Bathroom	SK	N/A		2/25/2020	-	-	-	None	SIGN	-	-
1021-1	Guidance Office Girls Bathroom	SK	N/A		2/25/2020	-	-	-	None	SIGN	-	-
1022-1	Guidance Office Womens Bathroom	SK	N/A		2/25/2020	-	-	-	None	SIGN	-	-
1023-1	Business Office Bathroom	SK	N/A		2/25/2020	-	-	-	None	SIGN	-	-
1024-1	Custodial Closet by Business Office	SS	N/A		2/25/2020	-	-	-	None	SIGN	-	-

Space #	Sample Location	Fixture Type	App or N/A	1 <sup>st</sup> Draw Results (ppb)	1st Draw Sampling Date	15 Second Draw Results (ppb)	60 Second Draw Results (ppb)	Flush Sampling Date	Remedial Recommendation	Remedial Response	Post Remedial Results (ppb)	Post Remedial Sampling Date
1025-1	C-Wing Mens Bathroom @ A	SK	N/A		2/25/2020	-	-	-	None	SIGN	-	-
1025-2	C-Wing Mens Bathroom @ B	SK	N/A		2/25/2020	-	-	-	None	SIGN	-	-
1026-1	C-Wing Hallway by Room C6	WF	N/A		2/25/2020	-	-	-	None	SIGN	-	-
1027-1	C-Wing Custodial Closet by Room C6	SS	N/A		2/25/2020	-	-	-	None	SIGN	-	-
1028-1	C-Wing Womens Bathroom @ A	SK	N/A		2/25/2020	-	-	-	None	SIGN	-	-
1028-2	C-Wing Womens Bathroom @ B	SK	N/A		2/25/2020	-	-	-	None	SIGN	-	-
1029-1	Basement Kitchen Island	SK	App	1.31	2/25/2020	-	-	-	None	-	-	-
1029-2	Basement Kitchen 3 Bay Left	SK	App	1.87	2/25/2020	-	-	-	None	-	-	-
1029-3	Basement Kitchen 3 Bay Middle	SK	App	2.28	2/25/2020	-	-	-	None	-	-	-
1029-4	Basement Kitchen 3 Bay Right	SK	App	1.73	2/25/2020	-	-	-	None	-	-	-
1029-5	Basement Kitchen 2 Bay by Coffee Left	SK	App	5.71	2/25/2020	-	-	-	None	-	-	-
1029-6	Basement Kitchen 2 Bay by Coffee Right	SK	App	2.24	2/25/2020	-	-	-	None	-	-	-
1029-7	Basement Kitchen Ice Machine	IM	App	<1.0	2/25/2020	-	-	-	None	-	-	-
1029-8	Basement Kitchen Handwash by Ice Machine	SK	App		2/25/2020	-	-	-	None	-	-	-
1029-9	Basement Kitchen 2 Bay Left	SK	App	1.15	2/25/2020	-	-	-	None	-	-	-
1029-10	Basement Kitchen 2 Bay Right	SK	App	1.53	2/25/2020	-	-	-	None	-	-	-
1029-11	Basement Kitchen Center	SPY	App	1.63	2/25/2020	-	-	-	None	-	-	-
1030-1	Boiler Room	SP	N/A		2/25/2020	-	-	-	None	SIGN	-	-
1031-1	Mens Locker Room Bathroom	SK	N/A		2/25/2020	-	-	-	None	SIGN	-	-
1032-1	Womens Locker Room Bathroom	SK	N/A		2/25/2020	-	-	-	None	SIGN	-	-

Space #	Sample Location	Fixture Type	App or N/A	1 <sup>st</sup> Draw Results (ppb)	1st Draw Sampling Date	15 Second Draw Results (ppb)	60 Second Draw Results (ppb)	Flush Sampling Date	Remedial Recommendation	Remedial Response	Post Remedial Results (ppb)	Post Remedial Sampling Date
1033-1	Loading Dock Custodial Closet	SS	N/A		2/25/2020	-	-	-	None	SIGN	-	-
1034-1	Faculty Lounge Womens Bathroom	SK	N/A		2/25/2020	-	-	-	None	SIGN	-	-
1035-1	Faculty Lounge Mens Bathroom	SK	N/A		2/25/2020	-	-	-	None	SIGN	-	-
1035-2	Faculty Lounge Mens Bathroom Custodial Closet	SS	N/A		2/25/2020	-	-	-	None	SIGN	-	-
1036-1	Faculty Lounge	SK	N/A		2/25/2020	-	-	-	None	SIGN	-	-
1037-1	Room 117A HVAC	SS	N/A		2/25/2020	-	-	-	None	SIGN	-	-
1038-1	Home Economics Room 119 @ A	SK	App	1.81	2/25/2020	-	-	-	None	-	-	-
1038-2	Home Economics Room 119 @ B	SK	App	1.49	2/25/2020	-	-	-	None	-	-	-
1039-1	Prep Room Between Rooms 119 & 121	SK	N/A		2/25/2020	-	-	-	None	SIGN	-	-
1040-1	Home Economics Room 120 @ A	SK	App	2.47	2/25/2020	-	-	-	None	-	-	-
1040-2	Home Economics Room 120 @ B	SK	App	3.52	2/25/2020	-	-	-	None	-	-	-
1041-1	Hallway by Room 120	WF	App	1.65	2/25/2020	-	-	-	None	-	-	-
1042-1	Unisex Faculty Bathroom @ A	SK	N/A		2/25/2020	-	-	-	None	SIGN	-	-
1042-2	Unisex Faculty Bathroom @ B	SK	N/A		2/25/2020	-	-	-	None	SIGN	-	-
1043-1	Hallway by Coaches Office	WF	App	<1.0	2/25/2020	-	-	-	None	-	-	-
1043-2	Hallway by Coaches Office	BF	App	<1.0	2/25/2020	-	-	-	None	-	-	-
1044-1	Coaches Office Custodial Closet	SS	N/A		2/25/2020	-	-	-	None	SIGN	-	-
1044-2	Coaches Office Exam Room	SK	N/A		2/25/2020	-	-	-	None	SIGN	-	-
1044-3	Coaches Office Back Room Ice Machine	IM	App	<1.0	2/25/2020	-	-	-	None	-	-	-
1045-1	Coaches Office Boys Team Locker Room Bathroom	WF	N/A		2/25/2020	-	-	-	None	SIGN	-	-



Space #	Sample Location	Fixture Type	App or N/A	1 <sup>st</sup> Draw Results (ppb)	1st Draw Sampling Date	15 Second Draw Results (ppb)	60 Second Draw Results (ppb)	Flush Sampling Date	Remedial Recommendation	Remedial Response	Post Remedial Results (ppb)	Post Remedial Sampling Date
1045-2	Coaches Office Boys Team Locker Room Bathroom @ A	SK	N/A		2/25/2020	-	-	-	None	SIGN	-	-
1045-3	Coaches Office Boys Team Locker Room Bathroom @ B	SK	N/A		2/25/2020	-	-	-	None	SIGN	-	-
1046-1	Womens Locker Room Bathroom by Big Gym	WF	App	2.09	2/25/2020	-	-	-	None	-	-	-
1046-2	Womens Locker Room Bathroom by Big Gym	SK	N/A		2/25/2020	-	-	-	None	SIGN	-	-
1046-3	Womens Locker Room Bathroom by Small Gym	WF	App	3.83	2/25/2020	-	-	-	None	-	-	-
1046-4	Womens Locker Room Bathroom by Small Gym	SK	N/A		2/25/2020	-	-	-	None	SIGN	-	-
1047-1	Womens Locker Room Coaches Office Bathroom	SK	N/A		2/25/2020	-	-	-	None	SIGN	-	-
1048-1	Womens ADA Bathroom by Big Gym @ A	SK	N/A		2/25/2020	-	-	-	None	SIGN	-	-
1048-2	Womens ADA Bathroom by Big Gym @ B	SK	N/A		2/25/2020	-	-	-	None	SIGN	-	-
1048-3	Womens ADA Bathroom by Big Gym Hose Bib	SP	N/A		2/25/2020	-	-	-	None	SIGN	-	-
1049-1	Mens ADA Bathroom by Big Gym @ A	SK	N/A		2/25/2020	-	-	-	None	SIGN	-	-
1049-2	Mens ADA Bathroom by Big Gym @ B	SK	N/A		2/25/2020	-	-	-	None	SIGN	-	-
1049-3	Mens ADA Bathroom by Big Gym Hose Bib @ A	SP	N/A		2/25/2020	-	-	-	None	SIGN	-	-
1049-4	Mens ADA Bathroom by Big Gym Hose Bib @ B	SP	N/A		2/25/2020	-	-	-	None	SIGN	-	-
1050-1	Mens Locker Room Bathroom by Big Gym	WF	App		2/25/2020	-	-	-	None	-	-	-
1050-2	Mens Locker Room Bathroom by Big Gym	SK	N/A		2/25/2020	-	-	-	None	SIGN	-	-
1050-3	Mens Locker Room Bathroom by Small Gym	WF	App	1.87	2/25/2020	-	-	-	None	-	-	-
1050-4	Mens Locker Room Bathroom by Small Gym	SK	N/A		2/25/2020	-	-	-	None	SIGN	-	-
1051-1	Mens Locker Room Coaches Office Bathroom	SK	N/A		2/25/2020	-	-	-	None	SIGN	-	-
1052-1	Custodial Closet by Small Gym	SS	N/A		2/25/2020	-	-	-	None	SIGN	-	-

Space #	Sample Location	Fixture Type	App or N/A	1 <sup>st</sup> Draw Results (ppb)	1st Draw Sampling Date	15 Second Draw Results (ppb)	60 Second Draw Results (ppb)	Flush Sampling Date	Remedial Recommendation	Remedial Response	Post Remedial Results (ppb)	Post Remedial Sampling Date
1053-1	Hallway by Room 216A	WF	App	<1.0	2/25/2020	-	-	-	None	-	-	-
1053-2	Hallway by Room 216A	BF	App	<1.0	2/25/2020	-	-	-	None	-	-	-
1054-1	Room 216A	SS	N/A		2/25/2020	-	-	-	None	SIGN	-	-
1055-1	Science Room 216 Teachers Station	SK	N/A		2/25/2020	-	-	-	None	SIGN	-	-
1055-2	Science Room 216 Counter 1 @ A	SK	N/A		2/25/2020	-	-	-	None	SIGN	-	-
1055-3	Science Room 216 Counter 1 @ B	SK	N/A		2/25/2020	-	-	-	None	SIGN	-	-
1055-4	Science Room 216 Counter 1 @ C	SK	N/A		2/25/2020	-	-	-	None	SIGN	-	-
1055-5	Science Room 216 Counter 2	SK	N/A		2/25/2020	-	-	-	None	SIGN	-	-
1055-6	Science Room 216 Counter 3 @ A	SK	N/A		2/25/2020	-	-	-	None	SIGN	-	-
1055-7	Science Room 216 Counter 3 @ B	SK	N/A		2/25/2020	-	-	-	None	SIGN	-	-
1055-8	Science Room 216 Counter 3 @ C	SK	N/A		2/25/2020	-	-	-	None	SIGN	-	-
1056-1	Science Room 214 Teachers Station	SK	N/A		2/25/2020	-	-	-	None	SIGN	-	-
1056-2	Science Room 214 Counter 1 @ A	SK	N/A		2/25/2020	-	-	-	None	SIGN	-	-
1056-3	Science Room 214 Counter 1 @ B	SK	N/A		2/25/2020	-	-	-	None	SIGN	-	-
1056-4	Science Room 214 Counter 1 @ C	SK	N/A		2/25/2020	-	-	-	None	SIGN	-	-
1056-5	Science Room 214 Counter 2	SK	N/A		2/25/2020	-	-	-	None	SIGN	-	-
1056-6	Science Room 214 Counter 3 @ A	SK	N/A		2/25/2020	-	-	-	None	SIGN	-	-
1056-7	Science Room 214 Counter 3 @ B	SK	N/A		2/25/2020	-	-	-	None	SIGN	-	-
1056-8	Science Room 214 Counter 3 @ C	SK	N/A		2/25/2020	-	-	-	None	SIGN	-	-
1057-1	Science Room 212 Teachers Station	SK	N/A		2/25/2020	-	-	-	None	SIGN	-	-

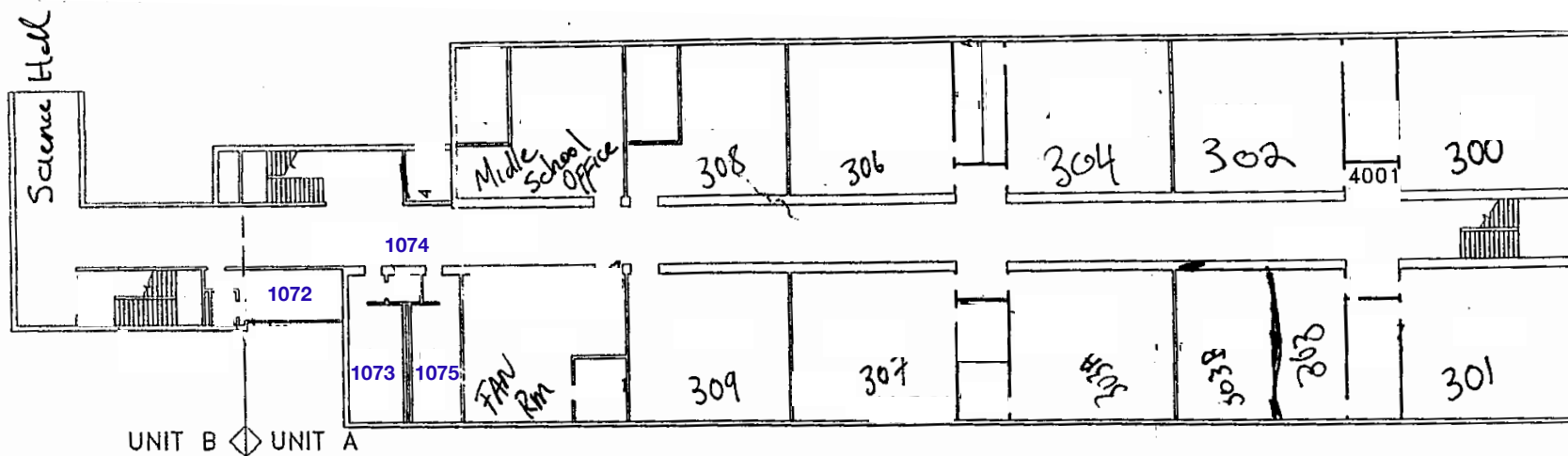
Space #	Sample Location	Fixture Type	App or N/A	1 <sup>st</sup> Draw Results (ppb)	1st Draw Sampling Date	15 Second Draw Results (ppb)	60 Second Draw Results (ppb)	Flush Sampling Date	Remedial Recommendation	Remedial Response	Post Remedial Results (ppb)	Post Remedial Sampling Date
1057-2	Science Room 212 Counter 1 @ A	SK	N/A		2/25/2020	-	-	-	None	SIGN	-	-
1057-3	Science Room 212 Counter 1 @ B	SK	N/A		2/25/2020	-	-	-	None	SIGN	-	-
1057-4	Science Room 212 Counter 1 @ C	SK	N/A		2/25/2020	-	-	-	None	SIGN	-	-
1057-5	Science Room 212 Counter 2	SK	N/A		2/25/2020	-	-	-	None	SIGN	-	-
1057-6	Science Room 212 Counter 3 @ A	SK	N/A		2/25/2020	-	-	-	None	SIGN	-	-
1057-7	Science Room 212 Counter 3 @ B	SK	N/A		2/25/2020	-	-	-	None	SIGN	-	-
1057-8	Science Room 212 Counter 3 @ C	SK	N/A		2/25/2020	-	-	-	None	SIGN	-	-
1058-1	Science Room 215 Teachers Station	SK	N/A		2/25/2020	-	-	-	None	SIGN	-	-
1058-2	Science Room 215 Counter 1 @ A	SK	N/A		2/25/2020	-	-	-	None	SIGN	-	-
1058-3	Science Room 215 Counter 1 @ B	SK	N/A		2/25/2020	-	-	-	None	SIGN	-	-
1058-4	Science Room 215 Counter 1 @ C	SK	N/A		2/25/2020	-	-	-	None	SIGN	-	-
1058-5	Science Room 215 Counter 2	SK	N/A		2/25/2020	-	-	-	None	SIGN	-	-
1058-6	Science Room 215 Counter 3 @ A	SK	N/A		2/25/2020	-	-	-	None	SIGN	-	-
1058-7	Science Room 215 Counter 3 @ B	SK	N/A		2/25/2020	-	-	-	None	SIGN	-	-
1058-8	Science Room 215 Counter 3 @ C	SK	N/A		2/25/2020	-	-	-	None	SIGN	-	-
1059-1	Prep Room by Science Room 215	SK	N/A		2/25/2020	-	-	-	None	SIGN	-	-
1059-2	Prep Room by Science Room 215	SP	App	<1.0	2/25/2020	-	-	-	None	-	-	-
1060-1	Science Room 213 Teachers Station	SK	N/A		2/25/2020	-	-	-	None	SIGN	-	-
1060-2	Science Room 213 Counter 1 @ A	SK	N/A		2/25/2020	-	-	-	None	SIGN	-	-
1060-3	Science Room 213 Counter 1 @ B	SK	N/A		2/25/2020	-	-	-	None	SIGN	-	-

Space #	Sample Location	Fixture Type	App or N/A	1 <sup>st</sup> Draw Results (ppb)	1st Draw Sampling Date	15 Second Draw Results (ppb)	60 Second Draw Results (ppb)	Flush Sampling Date	Remedial Recommendation	Remedial Response	Post Remedial Results (ppb)	Post Remedial Sampling Date
1060-4	Science Room 213 Counter 1 @ C	SK	N/A		2/25/2020	-	-	-	None	SIGN	-	-
1060-5	Science Room 213 Counter 2	SK	N/A		2/25/2020	-	-	-	None	SIGN	-	-
1060-6	Science Room 213 Counter 3 @ A	SK	N/A		2/25/2020	-	-	-	None	SIGN	-	-
1060-7	Science Room 213 Counter 3 @ B	SK	N/A		2/25/2020	-	-	-	None	SIGN	-	-
1060-8	Science Room 213 Counter 3 @ C	SK	N/A		2/25/2020	-	-	-	None	SIGN	-	-
1061-1	Chemical Storage	SK	N/A		2/25/2020	-	-	-	None	SIGN	-	-
1062-1	Ladies Faculty Room ADA Bathroom	SK	N/A		2/25/2020	-	-	-	None	SIGN	-	-
1063-1	Mens Bathroom by Room 210A Custodial Closet	SK	N/A		2/25/2020	-	-	-	None	SIGN	-	-
1063-2	Mens Bathroom by Room 210A @ A	SK	N/A		2/25/2020	-	-	-	None	SIGN	-	-
1063-3	Mens Bathroom by Room 210A @ B	SK	N/A		2/25/2020	-	-	-	None	SIGN	-	-
1064-1	Hallway by Room 210A	WF	App	<1.0	2/25/2020	-	-	-	None	-	-	-
1064-2	Hallway by Room 210A	BF	App	10.1	2/25/2020	-	-	-	None	-	-	-
1065-1	Womens Bathroom by Room 210A @ A	SK	N/A		2/25/2020	-	-	-	None	SIGN	-	-
1065-2	Womens Bathroom by Room 210A @ B	SK	N/A		2/25/2020	-	-	-	None	SIGN	-	-
1066-1	Hallway by Room 316A	WF	App	<1.0	2/25/2020	-	-	-	None	-	-	-
1066-2	Hallway by Room 316A	BF	App	<1.0	2/25/2020	-	-	-	None	-	-	-
1067-1	Science Room 314 Teachers Station	SK	N/A		2/25/2020	-	-	-	None	SIGN	-	-
1067-2	Science Room 314 Counter 1 @ A	SK	N/A		2/25/2020	-	-	-	None	SIGN	-	-
1067-3	Science Room 314 Counter 1 @ B	SK	N/A		2/25/2020	-	-	-	None	SIGN	-	-
1067-4	Science Room 314 Counter 1 @ C	SK	N/A		2/25/2020	-	-	-	None	SIGN	-	-

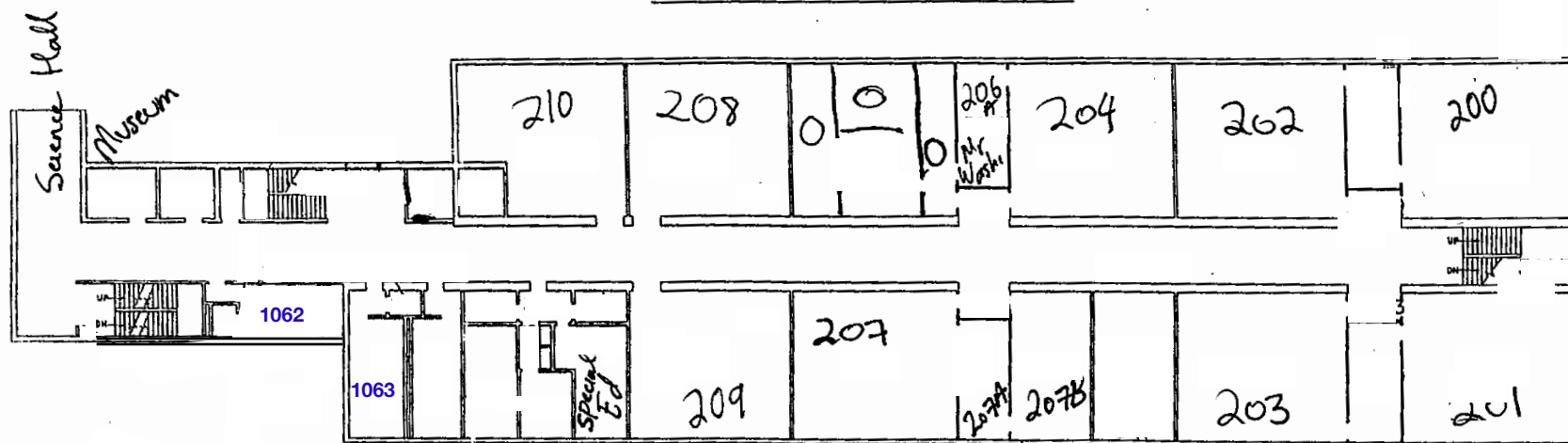
Space #	Sample Location	Fixture Type	App or N/A	1 <sup>st</sup> Draw Results (ppb)	1st Draw Sampling Date	15 Second Draw Results (ppb)	60 Second Draw Results (ppb)	Flush Sampling Date	Remedial Recommendation	Remedial Response	Post Remedial Results (ppb)	Post Remedial Sampling Date
1067-5	Science Room 314 Counter 1 @ D	SK	N/A		2/25/2020	-	-	-	None	SIGN	-	-
1067-6	Science Room 314 Counter 1 @ E	SK	N/A		2/25/2020	-	-	-	None	SIGN	-	-
1067-7	Science Room 314 Counter 1 @ F	SK	N/A		2/25/2020	-	-	-	None	SIGN	-	-
1067-8	Science Room 314 Counter 1 @ G	SK	N/A		2/25/2020	-	-	-	None	SIGN	-	-
1067-9	Science Room 314 Counter 2 @ A	SK	N/A		2/25/2020	-	-	-	None	SIGN	-	-
1067-10	Science Room 314 Counter 2 @ B	SK	N/A		2/25/2020	-	-	-	None	SIGN	-	-
1067-11	Science Room 314 Counter 2 @ C	SK	N/A		2/25/2020	-	-	-	None	SIGN	-	-
1067-12	Science Room 314 Counter 2 @ D	SK	N/A		2/25/2020	-	-	-	None	SIGN	-	-
1067-13	Science Room 314 Counter 2 @ E	SK	N/A		2/25/2020	-	-	-	None	SIGN	-	-
1067-14	Science Room 314 Counter 2 @ F	SK	N/A		2/25/2020	-	-	-	None	SIGN	-	-
1067-15	Science Room 314 Prep Room	SK	N/A		2/25/2020	-	-	-	None	SIGN	-	-
1068-1	Science Room 312 Teachers Station	SK	N/A		2/25/2020	-	-	-	None	SIGN	-	-
1068-2	Science Room 312 Counter 2 @ A	SK	N/A		2/25/2020	-	-	-	None	SIGN	-	-
1068-3	Science Room 312 Counter 2 @ B	SK	N/A		2/25/2020	-	-	-	None	SIGN	-	-
1068-4	Science Room 312 Counter 2 @ C	SK	N/A		2/25/2020	-	-	-	None	SIGN	-	-
1068-5	Science Room 312 Counter 2 @ D	SK	N/A		2/25/2020	-	-	-	None	SIGN	-	-
1068-6	Science Room 312 Counter 2 @ E	SK	N/A		2/25/2020	-	-	-	None	SIGN	-	-
1068-7	Science Room 312 Counter 2 @ F	SK	N/A		2/25/2020	-	-	-	None	SIGN	-	-
1068-8	Science Room 312 Prep Room	SK	N/A		2/25/2020	-	-	-	None	SIGN	-	-
1069-1	Science Room 315 Teachers Station	SK	N/A		2/25/2020	-	-	-	None	SIGN	-	-

Space #	Sample Location	Fixture Type	App or N/A	1 <sup>st</sup> Draw Results (ppb)	1st Draw Sampling Date	15 Second Draw Results (ppb)	60 Second Draw Results (ppb)	Flush Sampling Date	Remedial Recommendation	Remedial Response	Post Remedial Results (ppb)	Post Remedial Sampling Date
1069-2	Science Room 315 Counter 1 @ A	SK	N/A		2/25/2020	-	-	-	None	SIGN	-	-
1069-3	Science Room 315 Counter 1 @ B	SK	N/A		2/25/2020	-	-	-	None	SIGN	-	-
1069-4	Science Room 315 Counter 2	SK	N/A		2/25/2020	-	-	-	None	SIGN	-	-
1069-5	Science Room 315 Counter 3 @ A	SK	N/A		2/25/2020	-	-	-	None	SIGN	-	-
1069-6	Science Room 315 Counter 3 @ B	SK	N/A		2/25/2020	-	-	-	None	SIGN	-	-
1069-7	Science Room 315 Prep Room @ A	SK	N/A		2/25/2020	-	-	-	None	SIGN	-	-
1069-8	Science Room 315 Prep Room @ B	SK	N/A		2/25/2020	-	-	-	None	SIGN	-	-
1070-1	Science Prep Room Between 315 & 313	SK	N/A		2/25/2020	-	-	-	None	SIGN	-	-
1071-1	Science Room 313 Teachers Station	SK	N/A		2/25/2020	-	-	-	None	SIGN	-	-
1071-2	Science Room 313 Counter 1 @ A	SK	N/A		2/25/2020	-	-	-	None	SIGN	-	-
1071-3	Science Room 313 Counter 1 @ B	SK	N/A		2/25/2020	-	-	-	None	SIGN	-	-
1071-4	Science Room 313 Counter 1 @ C	SK	N/A		2/25/2020	-	-	-	None	SIGN	-	-
1071-5	Science Room 313 Counter 2	SK	N/A		2/25/2020	-	-	-	None	SIGN	-	-
1071-6	Science Room 313 Counter 3 @ A	SK	N/A		2/25/2020	-	-	-	None	SIGN	-	-
1071-7	Science Room 313 Counter 3 @ B	SK	N/A		2/25/2020	-	-	-	None	SIGN	-	-
1071-8	Science Room 313 Counter 3 @ C	SK	N/A		2/25/2020	-	-	-	None	SIGN	-	-
1072-1	Mens Faculty Room ADA Bathroom	SK	N/A		2/25/2020	-	-	-	None	SIGN	-	-
1073-1	Mens Bathroom by Room 310 Custodial Closet	SS	N/A		2/25/2020	-	-	-	None	SIGN	-	-
1073-2	Mens Bathroom by Room 310 @ A	SK	N/A		2/25/2020	-	-	-	None	SIGN	-	-
1073-3	Mens Bathroom by Room 310 @ B	SK	N/A		2/25/2020	-	-	-	None	SIGN	-	-

Space #	Sample Location	Fixture Type	App or N/A	1 <sup>st</sup> Draw Results (ppb)	1st Draw Sampling Date	15 Second Draw Results (ppb)	60 Second Draw Results (ppb)	Flush Sampling Date	Remedial Recommendation	Remedial Response	Post Remedial Results (ppb)	Post Remedial Sampling Date
1073-4	Mens Bathroom by Room 310 @ C	SK	N/A		2/25/2020	-	-	-	None	SIGN	-	-
1073-5	Mens Bathroom by Room 310 Hose Bib	SP	N/A		2/25/2020	-	-	-	None	SIGN	-	-
1074-1	Hallway by Room 310	WF	App	<1.0	2/25/2020	-	-	-	None	-	-	-
1074-2	Hallway by Room 310	BF	App	<1.0	2/25/2020	-	-	-	None	-	-	-
1075-1	Womens Bathroom by Room 310 @ A	SK	N/A		2/25/2020	-	-	-	None	SIGN	-	-
1075-2	Womens Bathroom by Room 310 @ B	SK	N/A		2/25/2020	-	-	-	None	SIGN	-	-
2001-1	Outside by Music Room	SP	N/A		2/27/2020	-	-	-	None	SIGN	-	-
2001-2	Outside by Art Room	SP	N/A		2/27/2020	-	-	-	None	SIGN	-	-
2001-3	Outside by C-Wing/PPS	SP	N/A		2/27/2020	-	-	-	None	SIGN	-	-
2001-4	Outside by Boiler Room	SP	N/A		2/27/2020	-	-	-	None	SIGN	-	-
2001-5	Outside by Art Room 7	SP	N/A		2/27/2020	-	-	-	None	SIGN	-	-
2001-6	Outside by Exterior Stage	SP	N/A		2/27/2020	-	-	-	None	SIGN	-	-
2001-7	Outside by side of Big Gym	SP	N/A		2/27/2020	-	-	-	None	SIGN	-	-
2001-8	Outside by Big Gym Hallway/Entrance	SP	N/A		2/27/2020	-	-	-	None	SIGN	-	-
2001-9	Outside by Small Gym/Tennis Courts	SP	N/A		2/27/2020	-	-	-	None	SIGN	-	-
2002-1	Outside by Football Field	SP	App	2.25	3/11/2020				None			



**THIRD FLOOR PLAN**



**SECOND FLOOR PLAN**



ENVIROSCIENCE  
CONSULTANTS, INC  
2150 SMITHTOWN AVENUE  
RONKONKOMA, NY 11779  
(631) 580-3191  
FAX 580-3195  
www.envirohealth.org

KEY PLAN  
NO SCALE

PROJECT

LEAD IN DRINKING WATER SOURCE LOCATIONS  
WOODLANDS MIDDLE/HIGH SCHOOL  
BUILDING A FLOOR PLAN

CLIENT

GREENBURGH CENTRAL SCHOOL DISTRICT



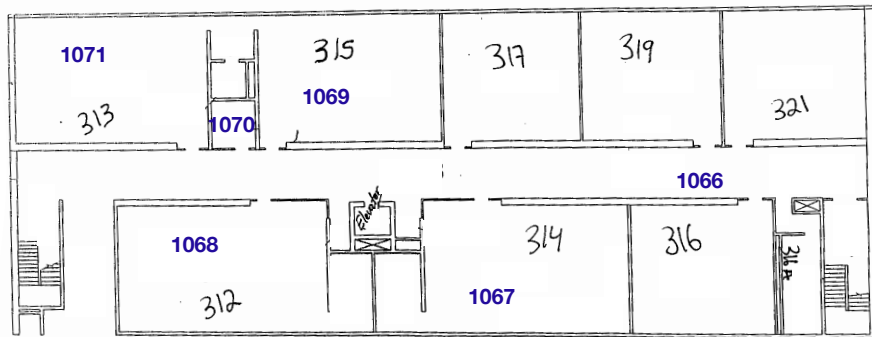
PROJECT #: 19446

NOT TO SCALE

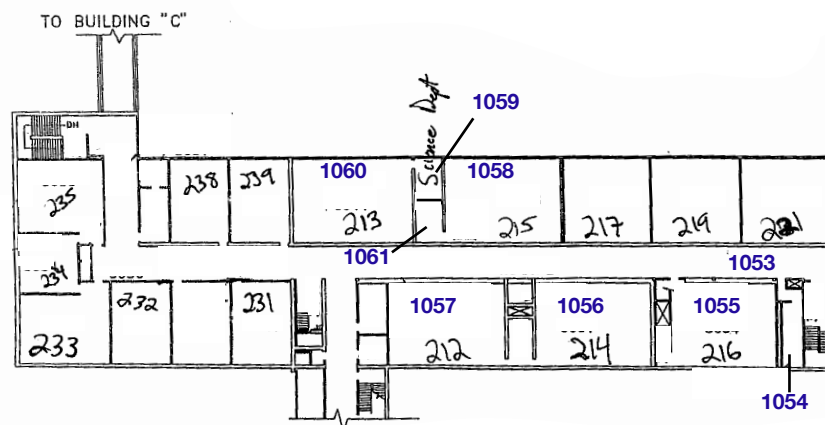
Date: 02/25/2020

DRAWING 1 of 1

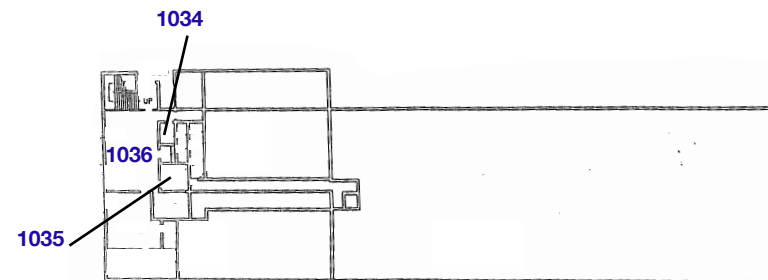




THIRD FLOOR



SECOND FLOOR



GROUND FLOOR



ENVIROSCIENCE  
CONSULTANTS, INC.  
2150 SMITHTOWN AVENUE  
RONKONKOMA, NY 11779  
(631) 580-3191  
FAX 580-3195  
www.envirohealth.org

KEY PLAN  
NO SCALE

PROJECT

LEAD IN DRINKING WATER SOURCE LOCATIONS  
WOODLANDS MIDDLE/HIGH SCHOOL  
BUILDING B FLOOR PLAN

CLIENT

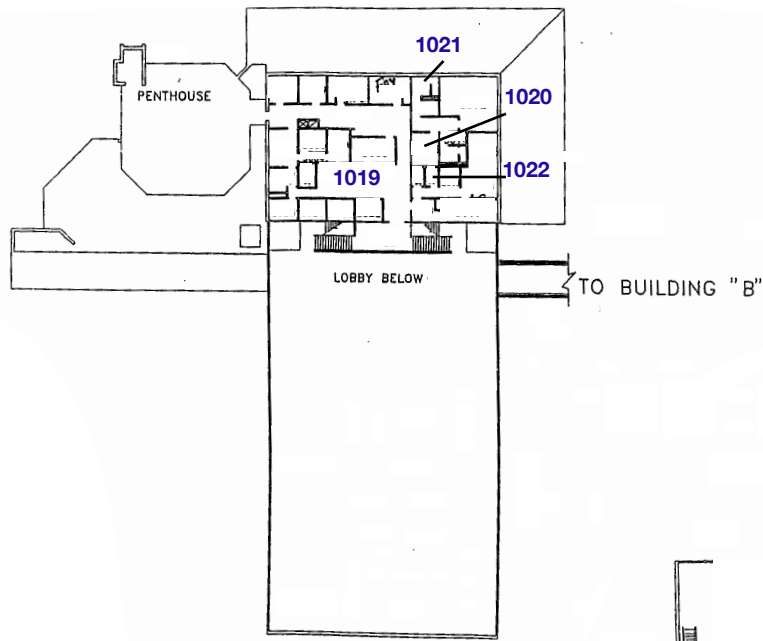
GREENBURGH CENTRAL SCHOOL DISTRICT



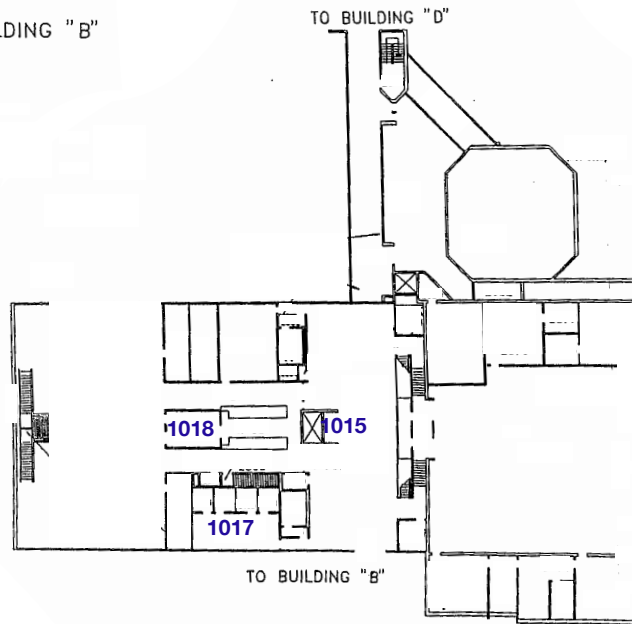
PROJECT #: 19446

NOT TO SCALE  
Date: 02/25/2020

DRAWING 1 of 1

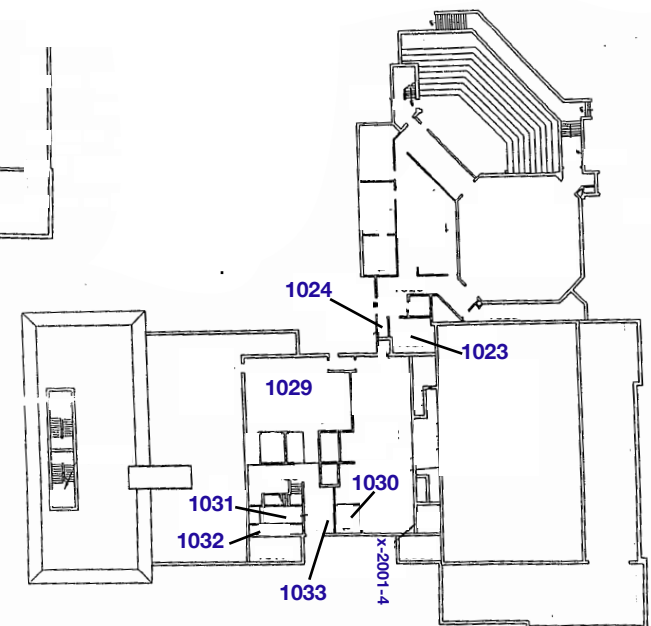


SECOND FLOOR PLAN



FIRST FLOOR PLAN

1025 - Men's Bathroom  
 1026 - Hallway by Room C6  
 1027 - Custodial Closet by Room C6  
 1028 - Women's Bathroom



GROUND FLOOR PLAN



ENVIROSCIENCE  
 CONSULTANTS, INC.  
 2150 SMITHTOWN AVENUE  
 RONKONKOMA, NY 11779  
 (631) 580-3191  
 FAX 580-3195  
 www.envirohealth.org

KEY PLAN  
 NO SCALE

PROJECT

LEAD IN DRINKING WATER SOURCE LOCATIONS  
 WOODLANDS MIDDLE/HIGH SCHOOL  
 BUILDING C FLOOR PLAN

CLIENT

GREENBURGH CENTRAL SCHOOL DISTRICT

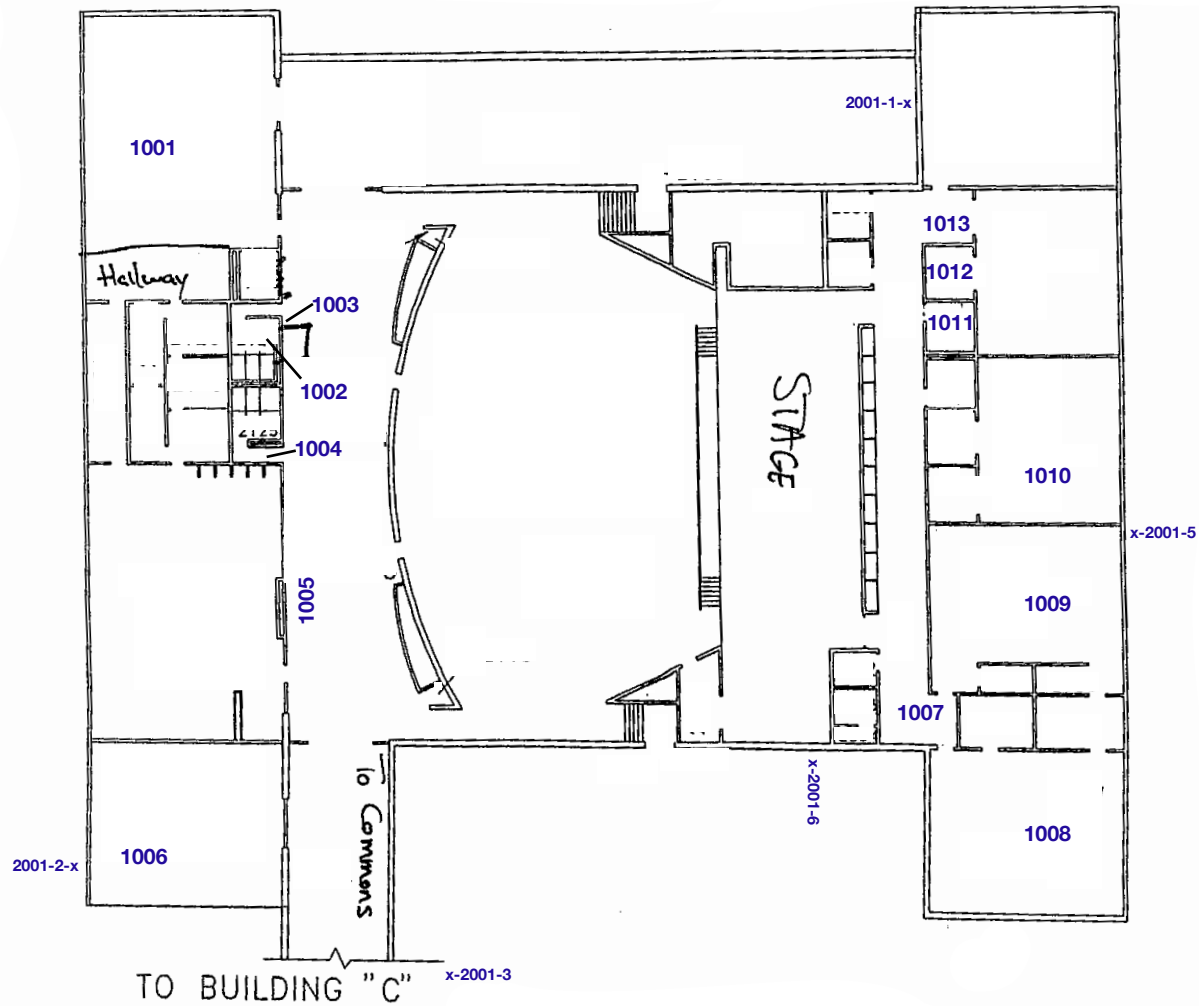


PROJECT #: 19446

NOT TO SCALE

Date: 02/25/2020

DRAWING 1 of 1



ENVIROSCIENCE  
CONSULTANTS, INC  
2150 SMITHTOWN AVENUE  
RONKONKOMA, NY 11779  
(631) 580-3191  
FAX 580-3195  
www.envirohealth.org

KEY PLAN  
NO SCALE

PROJECT

LEAD IN DRINKING WATER SOURCE LOCATIONS  
WOODLANDS MIDDLE/HIGH SCHOOL  
BUILDING D FLOOR PLAN

CLIENT

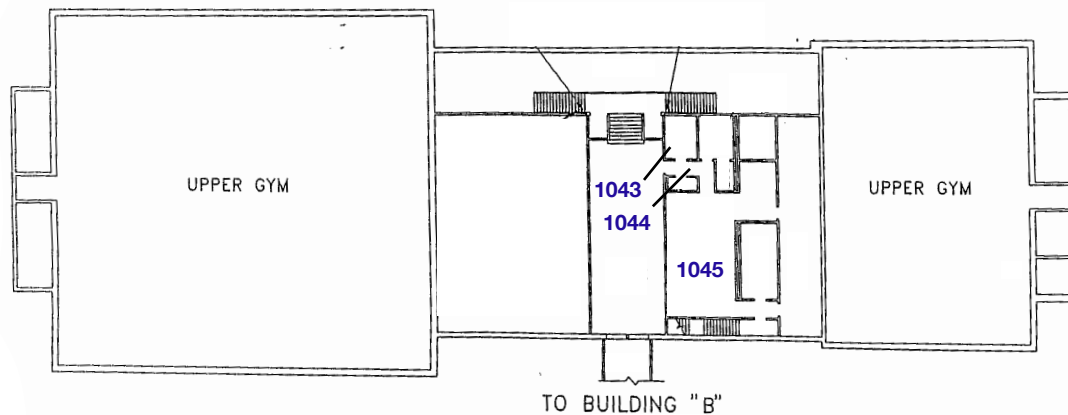
GREENBURGH CENTRAL SCHOOL DISTRICT



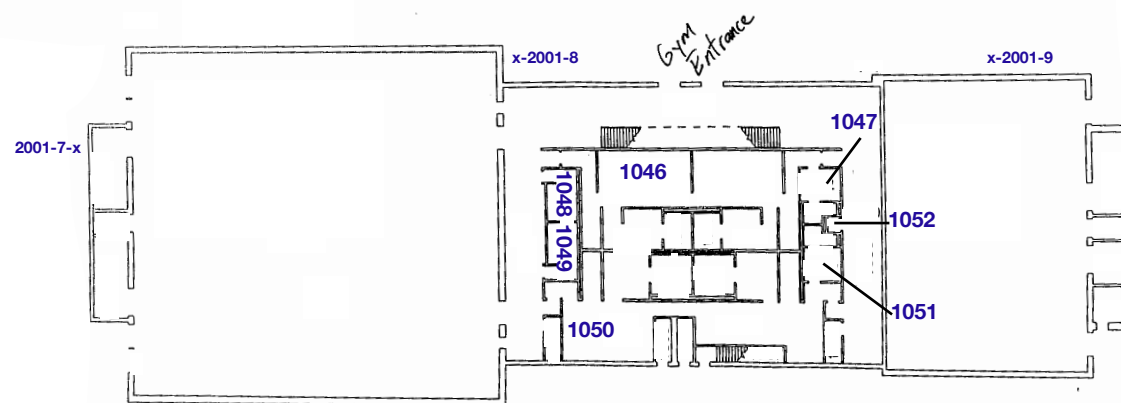
PROJECT #: 19446

NOT TO SCALE  
Date: 02/25/2020

DRAWING 1 of 1



FIRST FLOOR PLAN



GROUND FLOOR PLAN



ENVIROSCIENCE  
CONSULTANTS, INC  
2150 SMITHTOWN AVENUE  
RONKONKOMA, NY 11779  
(631) 580-3191  
FAX 580-3195  
www.envirohealth.org

KEY PLAN  
\_\_\_\_\_  
NO SCALE

PROJECT

LEAD IN DRINKING WATER SOURCE LOCATIONS  
WOODLANDS MIDDLE/HIGH SCHOOL  
F WING FLOOR PLAN

CLIENT

GREENBURGH CENTRAL SCHOOL DISTRICT



PROJECT #: 19446

NOT TO SCALE

Date: 02/25/2020

DRAWING 1 of 1

## Laboratory Report

NYE Report #: 2200919-14061

February 27, 2020

Enviroscience Consultants, Inc.  
2150 Smithtown Avenue  
Ronkonkoma, NY 11779

Project: Woodlands Middle/ Highschool

Dear Project Manager,

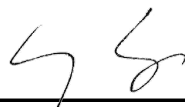
Enclosed is the Laboratory Analytical Report for potable water sample(s) received on February 25, 2020. New York Environmental analyzed the samples on February 26, 2020 for Lead (Pb) by EPA Method 200.9 Rev. 2.2.

If there are any questions regarding the analyses, please feel free to contact us at your convenience. New York Environmental is a NELAP accredited laboratory. Attached reported results meet the requirements of the NELAP standards unless otherwise noted.

Samples' analytical results relate only to the samples tested, in the condition received by the laboratory. This report shall not be reproduced except in its entirety without written approval of the laboratory.

We sincerely thank you for your business, and look forward to being of service for your future environmental testing needs.

Sincerely,



---

Li Tsang, Laboratory Director

Date Collected:	25 Feb 2020
Date Received:	25 Feb 2020
Date Analyzed:	26 Feb 2020

Analytical Method:	EPA 200.9 Rev. 2.2
Analyte, Matrix:	Lead, Potable Water

Lab ID	CID	Sample Location/Description	LOQ	Result	Units	Flag
200226J135	1	Main Office Conference Room-SK; Initial	1.00	<1.00	µg/L	
200226J136	2	Hallway by Main Office-WF; Initial	1.00	<1.00	µg/L	
200226J137	3	Hallway by Main Office-BF; Initial	1.00	<1.00	µg/L	
200226J138	4	Hallway by Media Center-WF; Initial	1.00	<1.00	µg/L	
200226J139	5	Hallway by Media Center-BF; Initial	1.00	<1.00	µg/L	
200226J140	6	Hallway by Café -WF; Initial	1.00	<1.00	µg/L	
200226J141	7	Hallway by Café -BF; Initial	1.00	<1.00	µg/L	
200226J142	8	Guidance Office Mail Room-SK; Initial	1.00	2.87	µg/L	
200226J143	9	Basement Kitchen Island-SK; Initial	1.00	1.31	µg/L	
200226J144	10	Basement Kitchen 3 Bay Left-SK; Initial	1.00	1.87	µg/L	
200226J145	11	Basement Kitchen 3 Bay Middle-SK; Initial	1.00	2.28	µg/L	
200226J146	12	Basement Kitchen 3 Bay Right-SK; Initial	1.00	1.73	µg/L	
200226J147	13	Basement Kitchen 2 Bay by Coffee Left-SK; Initial	1.00	5.71	µg/L	
200226J148	14	Basement Kitchen 2 Bay by Coffee Right-SK; Initial	1.00	2.24	µg/L	
200226J149	15	Basement Kitchen Ice Machine-IM; Initial	1.00	<1.00	µg/L	
200226J150	16	Basement Kitchen 2 Bay Left-SK; Initial	1.00	1.15	µg/L	
200226J151	17	Basement Kitchen 2 Bay Right-SK; Initial	1.00	1.53	µg/L	
200226J152	18	Basement Kitchen Center-SPY; Initial	1.00	1.63	µg/L	
200226J153	19	Home Economics Room 119 @ A-SK; Initial	1.00	1.81	µg/L	
200226J154	20	Home Economics Room 119 @ B-SK; Initial	1.00	1.49	µg/L	
200226J155	21	Home Economics Room 120 @ A-SK; Initial	1.00	2.47	µg/L	
200226J156	22	Home Economics Room 120 @ B-SK; Initial	1.00	3.52	µg/L	
200226J157	23	Hallway by Room 120-WF; Initial	1.00	1.65	µg/L	
200226J158	24	Hallway by Coaches Office-WF; Initial	1.00	<1.00	µg/L	
200226J159	25	Hallway by Coaches Office-BF; Initial	1.00	<1.00	µg/L	
200226J160	26	Coaches Office Back Room Ice Machine-IM; Initial	1.00	<1.00	µg/L	



Date Collected:	25 Feb 2020
Date Received:	25 Feb 2020
Date Analyzed:	26 Feb 2020

Analytical Method:	EPA 200.9 Rev. 2.2
Analyte, Matrix:	Lead, Potable Water

Lab ID	CID	Sample Location/Description	LOQ	Result	Units	Flag
200226J161	27	Womens Locker Room Bathroom by Big Gym -WF; Initial	1.00	2.09	µg/L	
200226J162	28	Womens Locker Room Bathroom by Small Gym -WF; Initial	1.00	3.83	µg/L	
200226J163	29	Mens Locker Room Bathroom by Small Gym-WF; Initial	1.00	1.87	µg/L	
200226J164	30	Hallway by Room 216A-WF; Initial	1.00	<1.00	µg/L	
200226J165	31	Hallway by Room 216A-BF; Initial	1.00	<1.00	µg/L	
200226J166	32	Prep Room by Science Room 215-SP; Initial	1.00	<1.00	µg/L	
200226J167	33	Hallway by Room 210A-WF; Initial	1.00	<1.00	µg/L	
200226J168	34	Hallway by Room 210A-BF; Initial	1.00	10.1	µg/L	
200226J169	35	Hallway by Room 316A-WF; Initial	1.00	<1.00	µg/L	
200226J170	36	Hallway by Room 316A-BF; Initial	1.00	<1.00	µg/L	
200226J171	37	Hallway by Room 310-WF; Initial	1.00	<1.00	µg/L	
200226J172	38	Nurses Office Ice Machine-IM; Initial	1.00	<1.00	µg/L	

Comment:

CID: Client ID LOQ: Limit of Quantitation

**Laboratory Report**

NYE Report #: 2201237-14217

March 13, 2020

Enviroscience Consultants, Inc.  
2150 Smithtown Avenue  
Ronkonkoma, NY 11779

Project: 19446; Woodlands Middle/ High School, Greenburgh

Dear Project Manager,

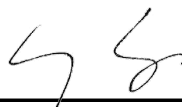
Enclosed is the Laboratory Analytical Report for potable water sample(s) received on March 12, 2020. New York Environmental analyzed the samples on March 13, 2020 for Lead (Pb) by EPA Method 200.9 Rev. 2.2.

If there are any questions regarding the analyses, please feel free to contact us at your convenience. New York Environmental is a NELAP accredited laboratory. Attached reported results meet the requirements of the NELAP standards unless otherwise noted.

Samples' analytical results relate only to the samples tested, in the condition received by the laboratory. This report shall not be reproduced except in its entirety without written approval of the laboratory.

We sincerely thank you for your business, and look forward to being of service for your future environmental testing needs.

Sincerely,



---

Li Tsang, Laboratory Director



Date Collected:	11 Mar 2020
Date Received:	12 Mar 2020
Date Analyzed:	13 Mar 2020

Analytical Method:	EPA 200.9 Rev. 2.2
Analyte, Matrix:	Lead, Potable Water

<u>Lab ID</u>	<u>CID</u>	<u>Sample Location/Description</u>	<u>LOQ</u>	<u>Result</u>	<u>Units</u>	<u>Flag</u>
2003120007	1	Outside by Football Field-SP, Initial	1.00	2.25	µg/L	

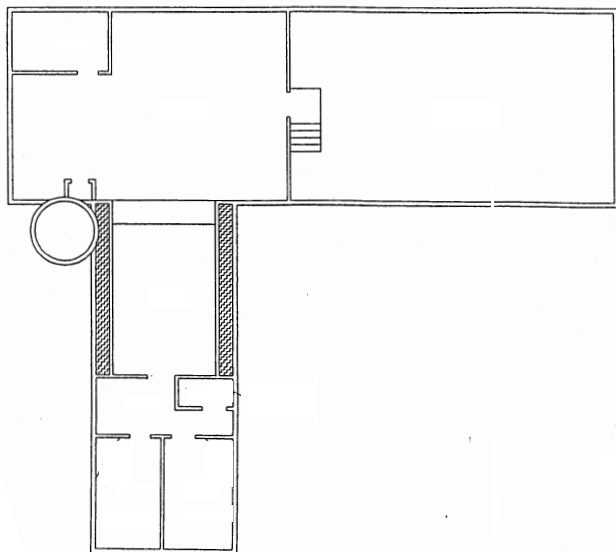
Comment:

CID: Client ID LOQ: Limit of Quantitation

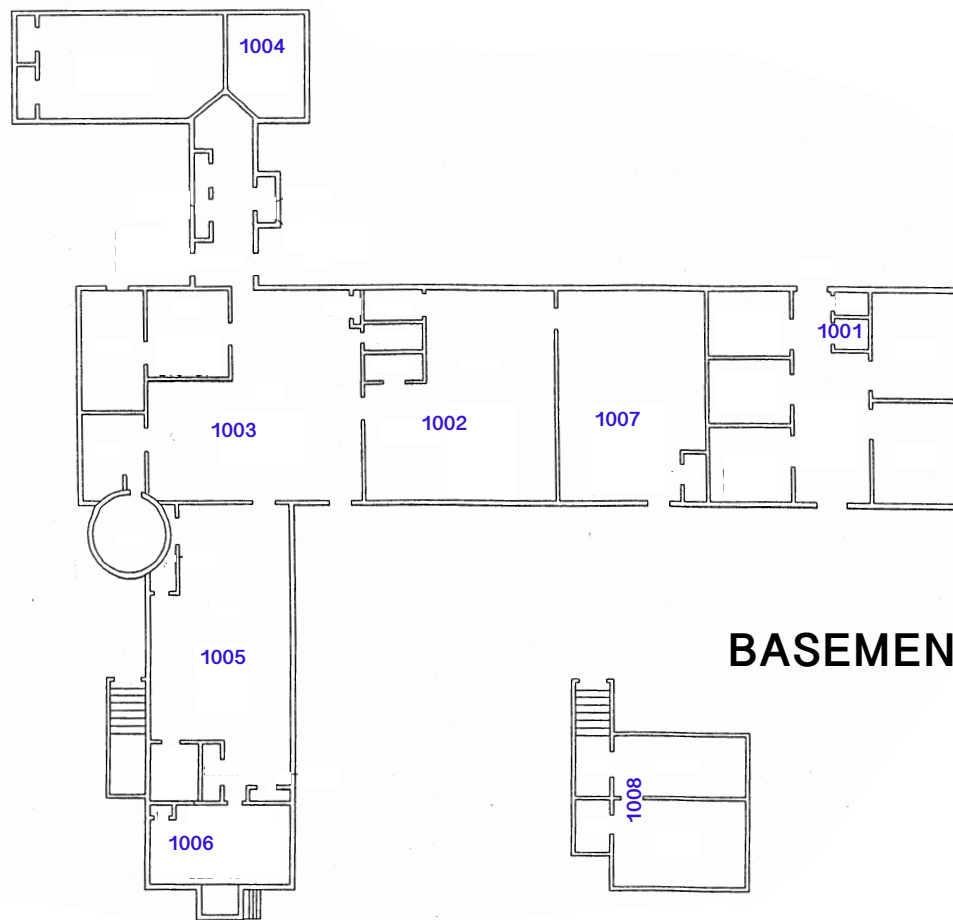
## Appendix E

Space #	Sample Location	Fixture Type	App or N/A	Latest 1 <sup>st</sup> Draw Results (ppb)	Latest 1st Draw Sampling Date	15 Second Draw Results (ppb)	60 Second Draw Results (ppb)	Date	Remedial Recommendation	Remedial Response	Post Remedial Results (ppb)	Post Remedial Sampling Date
1001-1	Bathroom by Main Office	SK	N/A		2/25/2020	-	-	-	None	SIGN	-	-
1002-1	Room 3	SS	N/A		2/25/2020	-	-	-	None	SIGN	-	-
1002-2	Room 3 Bathroom	SK	N/A		2/25/2020	-	-	-	None	SIGN	-	-
1003-1	Room 2	SS	N/A		2/25/2020	-	-	-	None	SIGN	-	-
1003-2	Room 2 Bathroom	SK	N/A		2/25/2020	-	-	-	None	SIGN	-	-
1004-1	Nurses Office	SK	N/A		2/25/2020	-	-	-	None	SIGN	-	-
1005-1	Room 1 Bathoom	SS	N/A		2/25/2020	-	-	-	None	SIGN	-	-
1006-1	Kitchen 2 Bay	SK	N/A		2/25/2020	-	-	-	None	SIGN	-	-
1007-1	Room 4	SS	N/A		2/25/2020	-	-	-	None	SIGN	-	-
1008-1	Bolier Room	SP	N/A		2/25/2020	-	-	-	None	SIGN	-	-

# ATTIC



# GROUND FLOOR



# BASEMENT



ENVIROSCIENCE  
CONSULTANTS, INC.  
2150 SMITHTOWN AVENUE  
RONKONKOMA, NY 11779  
(631) 580-3191  
FAX 580-3195  
www.envirohealth.org

KEY PLAN  
NO SCALE

PROJECT

LEAD IN DRINKING WATER SOURCE LOCATIONS  
EARLY CHILDHOOD CENTER  
FLOOR PLAN

CLIENT

GREENBURGH CENTRAL SCHOOL DISTRICT



PROJECT #: 19446

NOT TO SCALE

Date: 02/25/2020

DRAWING 1 of 1

## Appendix F

Space #	Sample Location	Fixture Type	App or N/A	Latest 1 <sup>st</sup> Draw Results (ppb)	Latest 1st Draw Sampling Date	15 Second Draw Results (ppb)	60 Second Draw Results (ppb)	Date	Remedial Recommendation	Remedial Response	Post Remedial Results (ppb)	Post Remedial Sampling Date
1001-1	Copy Room Bathroom	SK	N/A		2/25/2020	-	-	-	None	SIGN	-	-
2001-1	Second Floor Bathroom	SK	N/A		2/25/2020	-	-	-	None	SIGN	-	-
3001-1	Boiler Room	SP	N/A		2/25/2020	-	-	-	None	SIGN	-	-

## Appendix G

Space #	Sample Location	Fixture Type	App or N/A	Latest 1 <sup>st</sup> Draw Results (ppb)	Latest 1st Draw Sampling Date	15 Second Draw Results (ppb)	60 Second Draw Results (ppb)	Date	Remedial Recommendation	Remedial Response	Post Remedial Results (ppb)	Post Remedial Sampling Date
1001-1	Ladies Bathroom in Drivers Lunch Room	SK	N/A		2/25/2020	-	-	-	None	SIGN	-	-
1002-1	Mens Bathroom in Drivers Lunch Room	SK	N/A		2/25/2020	-	-	-	None	SIGN	-	-
2001-1	Dispatch Hallway Management Bathroom	SK	N/A		2/25/2020	-	-	-	None	SIGN	-	-
2002-1	Mechanic Bathroom	SS	N/A		2/25/2020	-	-	-	None	SIGN	-	-
2003-1	Mechanic Work Area	SP	N/A		2/25/2020	-	-	-	None	SIGN	-	-
3001-1	Outside by Mechanic Work Area	SP	N/A		2/25/2020	-	-	-	None	SIGN	-	-



## Appendix H

Space #	Sample Location	Fixture Type	App or N/A	Latest 1 <sup>st</sup> Draw Results (ppb)	Latest 1st Draw Sampling Date	15 Second Draw Results (ppb)	60 Second Draw Results (ppb)	Date	Remedial Recommendation	Remedial Response	Post Remedial Results (ppb)	Post Remedial Sampling Date
1001-1	Left Garage Hose Bib	SP	N/A		3/11/2020	-	-	-	None	SIGN	-	-
1002-1	PPS Conference Room Bathroom	SK	N/A		3/11/2020	-	-	-	None	SIGN	-	-
1003-1	Custodial Office Bathroom	SK	N/A		3/11/2020	-	-	-	None	SIGN	-	-
1003-2	Cudstodial Office	SK	N/A		3/11/2020	-	-	-	None	SIGN	-	-
1004-1	Bathroom by Room 1	SK	N/A		3/11/2020	-	-	-	None	SIGN	-	-
1005-1	Kitchenette by Room 1	SK	N/A		3/11/2020	-	-	-	None	SIGN	-	-
1005-2	Kitchenette by Room 1	SPY	N/A		3/11/2020	-	-	-	None	SIGN	-	-
1006-1	Bathroom by Room 2	SK	N/A		3/11/2020	-	-	-	None	SIGN	-	-
2001-1	Super Intendent Bathroom	SK	N/A		3/11/2020	-	-	-	None	SIGN	-	-
2002-1	Secretary Bathroom	SK	N/A		3/11/2020	-	-	-	None	SIGN	-	-
2003-1	Custodial Closet by Secretary Bathroom	SS	N/A		3/11/2020	-	-	-	None	SIGN	-	-
2004-1	Assistant Super Intendent Bathroom	SK	N/A		3/11/2020	-	-	-	None	SIGN	-	-
2005-1	Kitchen by Conference Room	SK	N/A		3/11/2020	-	-	-	None	SIGN	-	-
2005-2	Kitchen by Conference Room	SPY	N/A		3/11/2020	-	-	-	None	SIGN	-	-
2006-1	PPS Bathroom	SK	N/A		3/11/2020	-	-	-	None	SIGN	-	-
3001-1	Mens Bathroom by Mr. Falcones Office	SK	N/A		3/11/2020	-	-	-	None	SIGN	-	-
3002-1	Bathroom by Filing Room Hallway	SK	N/A		3/11/2020	-	-	-	None	SIGN	-	-
3003-1	Womens Bathroom by Business Office	SK	N/A		3/11/2020	-	-	-	None	SIGN	-	-
3004-1	Custodial Closet by Business Office	SS	N/A		3/11/2020	-	-	-	None	SIGN	-	-
4001-1	Conference Room	SK	N/A		3/11/2020	-	-	-	None	SIGN	-	-

Space #	Sample Location	Fixture Type	App or N/A	Latest 1 <sup>st</sup> Draw Results (ppb)	Latest 1st Draw Sampling Date	15 Second Draw Results (ppb)	60 Second Draw Results (ppb)	Date	Remedial Recommendation	Remedial Response	Post Remedial Results (ppb)	Post Remedial Sampling Date
4001-2	Conference Room Bathroom	SK	N/A		3/11/2020	-	-	-	None	SIGN	-	-
5001-1	Outside Hose Bib by Room 1	SP	N/A		3/11/2020	-	-	-	None	SIGN	-	-
5001-2	Outside Hose Bib by Right Garage	SP	N/A		3/11/2020	-	-	-	None	SIGN	-	-